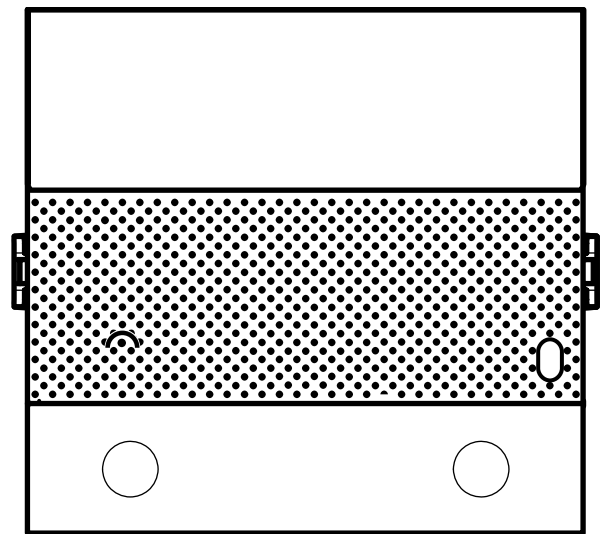
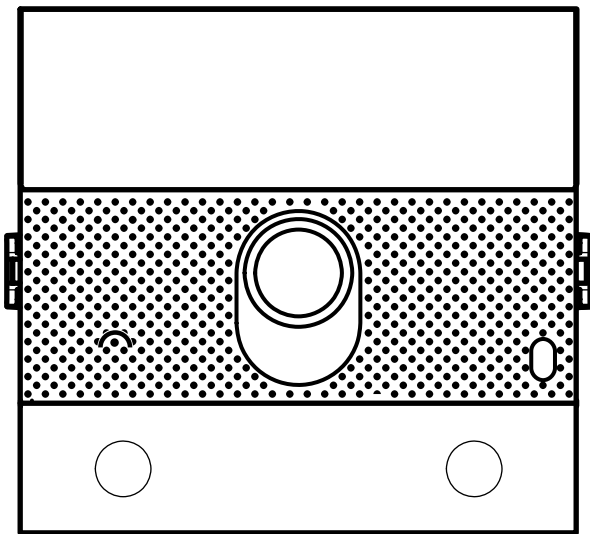


**Ultra**  
UT2020  
UT2010VC

**COMELIT**  
F E E L · S E C U R E

COMPLETE TECHNICAL MANUAL

---



**Join us  
in taking care  
of our planet**



## UT2020

Audio/video module for Ultra entrance panel, Simplebus2 system. To be used in systems with power supply unit art. 1210 / 1210A.

Wide-angle colour video camera (field of view: 120° horizontal, 90° vertical)



## UT2010VC

Audio module prepared for connection of a remote analog camera with PAL standard for Ultra entrance panel, Simplebus2 system. To be used in systems with power supply unit art. 1210 / 1210A.

*Easy to install and simple to configure thanks to the Smart programming of the call buttons.*

*Dusk sensor for the automatic switching off of the name tag backlighting during daytime hours.*

*Omnidirectional digital microphone and dual speaker for high-fidelity audio.*

*Audio/visual signals to assist people with disabilities, which can be activated via programming.*

*Prepared for 2 call buttons. To be completed with cap, single button or double button made of professional plastic with anti-yellowing and anti-dulling treatment or in aluminum.*

*Adjustments and programming without removing the module.*

*Dimensions: 100 x 90 x 35 mm.*



**Think first  
before printing**

**Help us save the planet.**

*Think of the planet before printing this document.*

**and use the  
interactive links**

**You are viewing an interactive document:** quickly reach the content you are interested in via links.



# Table of contents

<b>Description</b>	<b>6</b>
<b>Installation notes (art. UT2020)</b>	<b>8</b>
<b>Technical specifications</b>	<b>9</b>
art. UT2020	9
art. UT2010VC	11
<b>Installation</b>	<b>13</b>
<b>Flush-mounted installation</b>	<b>14</b>
Removal of name tag labels (2A) /module (2B)	15
Installation with adjacent flush-mounted boxes	16
<b>Wall-mounted installation</b>	<b>17</b>
Removal of name tag labels (2A) /module (2B)	18
Installation with adjacent wall-mounted housings	19
<b>Module connections</b>	<b>20</b>
Consumption table of the outdoor entrance panel modules	20
<b>Programming</b>	<b>23</b>
Button type configuration to be maintained in normal operation (single/double) art. UT9200 (double height/wide) art. UT9201	23
Addressing button modules	23
Programming user codes	23
<b>Smart programming of consecutive user codes</b>	<b>24</b>
<b>Programming specific user codes</b>	<b>25</b>
<b>User code table</b>	<b>26</b>
<b>Configuration via PC</b>	<b>27</b>
Notifications and errors	27

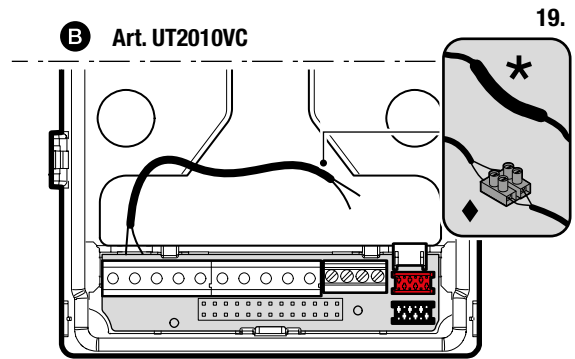
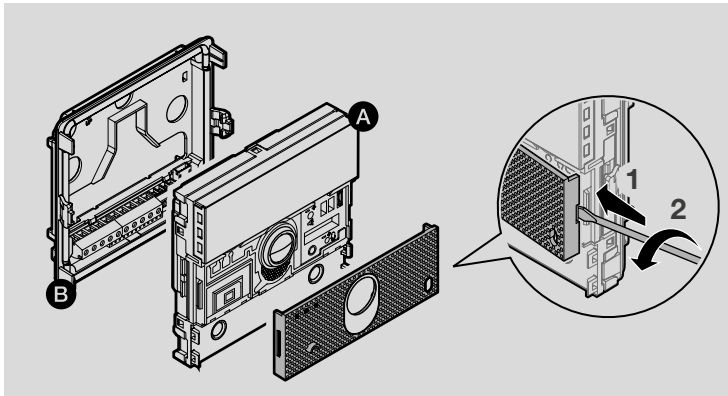
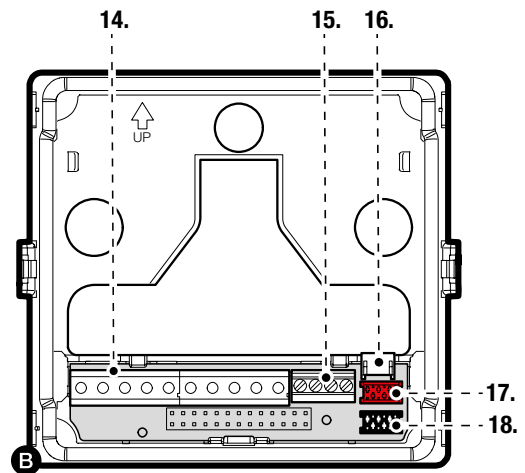
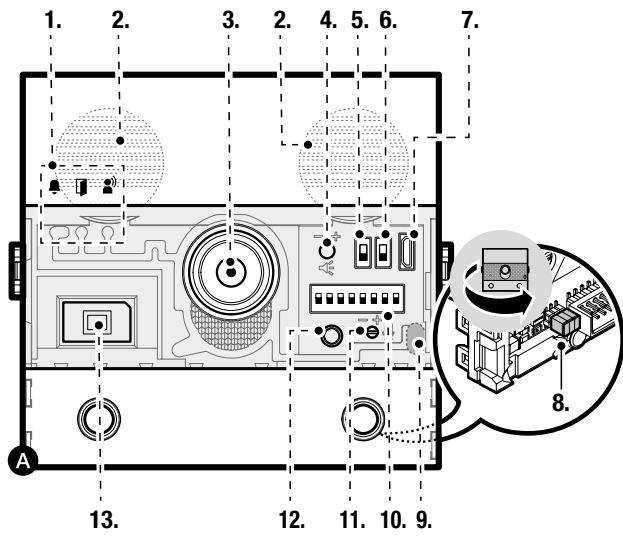
<b><u>Special programming via dip switch</u></b>	<b>28</b>
Special programming table	29
<b><u>Programming voice message language</u></b>	<b>32</b>
Programming voice messages in a single language	32
Programming voice messages in two languages	33
<b><u>Dusk sensor</u></b>	<b>34</b>
Management of camera LED lighting and button backlighting	34
Check dusk sensor operation	35
Adjustment of the brightness intensity of the button leds and the camera illuminator	35
<b><u>Light me function</u></b>	<b>37</b>
Behavior of the Light me function depending on the led backlighting mode	37
<b><u>Replacement of the audio/video module with programming restore backup</u></b>	<b>38</b>
<b><u>System performance</u></b>	<b>39</b>
<b><u>Wiring diagrams</u></b>	<b>40</b>
<b><u>Connections</u></b>	<b>42</b>
Remote camera connection (only for art. UT2010VC)	42
Connection with separate power supply	42
Use of the entrance panel relay	43
Use of security door lock	43
<b><u>System performance and diagrams</u></b>	<b>44</b>



*To take advantage of all available features, it is necessary that ALL modules making up the outdoor entrance panel are updated to the latest firmware version downloadable from the website **pro.comelitgroup.com***

*For the update, use the ViP Manager software downloadable from the website **pro.comelitgroup.com***

# Description



# Use the supplied screwdriver

1. Indicator led

call sent (green) / system busy (red)

lock-release activated

communication in progress

2. Speakers

3. Colour video camera (only with art. UT2020)

4. Speaker volume adjustment #

5. S1 programming selector for buttons

6. S2 special programming selector

7. Micro USB input for programming via computer

8. Jumper for power supply management (remove in case of separate power supply)

9. Dusk sensor

10. Addressing and programming dip switch

11. Microphone volume adjustment #

12. Programming confirmation button #

13. Digital microphone

**14.** Connection terminal block:

**RTE** programmable input RTE (local lock-release input) or DO (door open signal)

**GND SE-** reference negative for RTE input and electric door lock

**SE+** connection for electric door lock

**NO NC COM** relay contacts

**V- V+** power supply

**LL** bus line connection

**15.** Ethernet terminal block to be used only in the presence of additional modules equipped with a LAN network

**16.** Connector for connecting additional modules equipped with LAN network

**17.** Connector for connecting additional modules

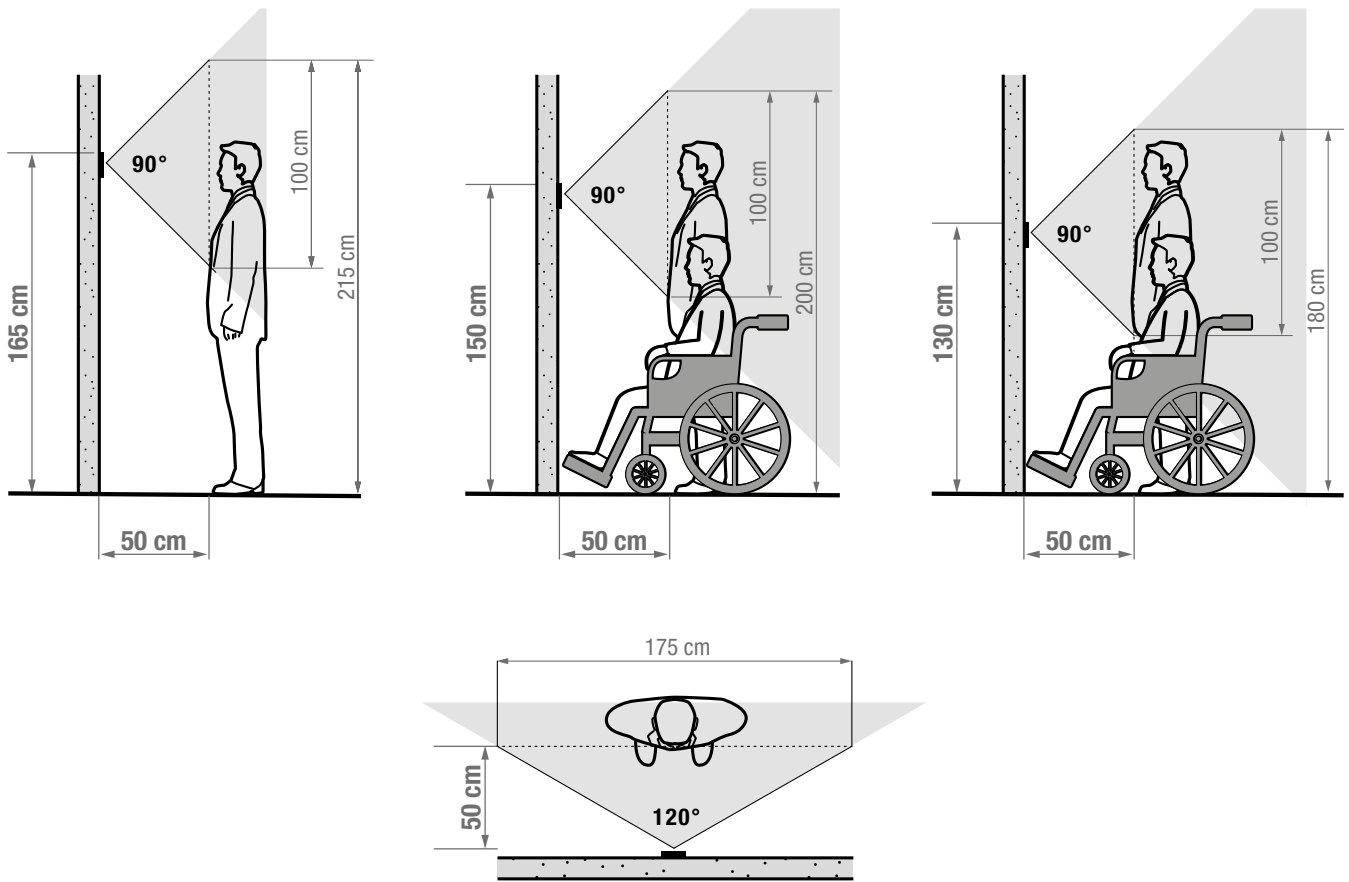
**18.** Connector for connecting additional modules

**19.** Remote camera connection (only with art. UT2010VC):

◆ in flush-mounted installations use the terminal;

★ in surface-mounted installations, solder the cables and use heat-shrink tubing.

# Installation notes (art. UT2020)



The camera must not be installed facing light sources, or in places where the subject being filmed remains heavily backlit. In poorly lit environments, it is recommended to provide an additional light source.

# Technical specifications

## art. UT2020

GENERAL DATA	
Type	Modular
Height (mm)	90
Width (mm)	100
Depth (mm)	35
Product weight (g)	350
Product color	Aluminum, Black RAL9005, Transparent
Type of covering materials	Polycarbonate, Aluminum alloy
Flush-mounted installation	Yes, with dedicated accessory
Surface-mounted installation	Yes, with dedicated accessory
COMPATIBLE SYSTEMS	
Audio/video Simplebus 2 with power supply unit art. 1210/1210A	Yes
AUDIO FEATURES	
Microphone	MEMS digital audio sensor, omnidirectional
Speaker	28mm (ø), 8 Ohm, 1W (2)
Implemented technologies	Full-duplex
CAMERA FEATURES	
Camera	Colours
Sensor type	1/3" CMOS
Fixed lens size (mm)	1,79
Viewing angle (H x V - °)	120 x 90
Sensitivity	0.45
Video resolution	1288x968
ELECTRICAL FEATURES	
Type of power supply	Power supply from video door-entry bus
Power supply voltage	33VDC
Stand-by absorption (W)	1,5
Maximum absorption (W)	6
HARDWARE FEATURES	
Type of call	Buttons
Type of buttons	Mechanical
Number of buttons (no.)	2
Backlight color	White, Off
Terminals	L L V+ V- COM NC NO SE+ SE-/GND RTE TX- TX+ RX- RX+
Number of inputs (no.)	1
Number of outputs (no.)	2
Type of outputs	Relay (C-NO-NC, 4A@12÷24 VAC/VDC, inrush 10A), SE: 4A unlocking pulse, 200mA holding current for door locks 12VAC/DC (maximum impedance 18 Ohm)
Communication ports	Micro-USB
Dusk sensor	Yes

**ADJUSTMENTS**

<b>Speaker volume</b>	Yes
<b>Microphone volume</b>	Yes
<b>Backlight brightness</b>	Yes

**PROGRAMMING MODES**

<b>Manual (via dip switch)</b>	Yes
<b>ViP Manager software</b>	Yes

**ENVIRONMENTAL AND COMPLIANCE FEATURES**

<b>IP protection rating</b>	IP65
<b>IK anti-vandal protection rating</b>	IK08
<b>Operating temperature (°C)</b>	-25 ÷ 55
<b>Operating humidity (max RH) (%)</b>	25 ÷ 95
<b>Environmental class</b>	IV
<b>Certifications</b>	RoHS II - 2011/65/EU (EN IEC 63000:2018), EMC 2014/30/EU (EN 61000-6-1:2007 , EN 61000-6-3:2007+A1:2011)

**MAIN FUNCTIONS**

<b>Lock-release</b>	Yes
<b>Number of auxiliary relays (no.)</b>	1
<b>Input for local key button</b>	Yes
<b>Input for door open signal</b>	Yes
<b>Visual indications of system status</b>	Yes
<b>Acoustic indications of system status</b>	Yes
<b>Voice synthesis of system status</b>	Yes

## art. UT2010VC

GENERAL DATA	
Type	Modular
Height (mm)	90
Width (mm)	100
Depth (mm)	35
Product weight (g)	265
Product color	Aluminum, Black RAL9005, Transparent
Type of covering materials	Polycarbonate, Aluminum alloy
Flush-mounted installation	Yes, with dedicated accessory
Surface-mounted installation	Yes, with dedicated accessory

COMPATIBLE SYSTEMS	
Audio/video Simplebus 2 with power supply unit art. 1210/1210A	Yes

AUDIO FEATURES	
Microphone	MEMS digital audio sensor, omnidirectional
Speaker	28mm (ø), 8 Ohm, 1W (2)

ELECTRICAL FEATURES	
Type of power supply	Power supply from video door-entry bus
Power supply voltage	33VDC
Stand-by absorption (W)	1,5
Maximum absorption (W)	4

HARDWARE FEATURES	
Type of call	Buttons
Type of buttons	Mechanical
Number of buttons (no.)	2
Backlight color	White, Off
Terminals	L L V+ V- COM NC NO SE+ SE-/GND RTE TX- TX+ RX- RX+
Number of inputs (no.)	1
Number of outputs (no.)	2
Type of outputs	Relay (C-NO-NC, 4A@12÷24 VAC/VDC, inrush 10A), SE: 4A unlocking pulse, 200mA holding current for door locks 12VAC/DC (maximum impedance 18 Ohm)
Communication ports	Micro-USB
Dusk sensor	Yes

ADJUSTMENTS	
Speaker volume	Yes
Microphone volume	Yes
Backlight brightness	Yes

PROGRAMMING MODES	
Manual (via dip switch)	Yes
ViP Manager software	Yes

ENVIRONMENTAL AND COMPLIANCE FEATURES	
IP protection rating	IP65
IK anti-vandal protection rating	IK08
Operating temperature (°C)	-25 ÷ 55
Operating humidity (max RH) (%)	25 ÷ 95
Environmental class	IV

**ENVIRONMENTAL AND COMPLIANCE FEATURES**

<b>Certifications</b>	RoHS II - 2011/65/EU (EN IEC 63000:2018), EMC 2014/30/EU (EN 61000-6-1:2007, EN 61000-6-3:2007+A1:2011)
-----------------------	---

**MAIN FUNCTIONS**

<b>Lock-release</b>	Yes
<b>Number of auxiliary relays (no.)</b>	1
<b>Input for local key button</b>	Yes
<b>Input for door open signal</b>	Yes
<b>Visual indications of system status</b>	Yes
<b>Acoustic indications of system status</b>	Yes
<b>Voice synthesis of system status</b>	Yes

# Installation

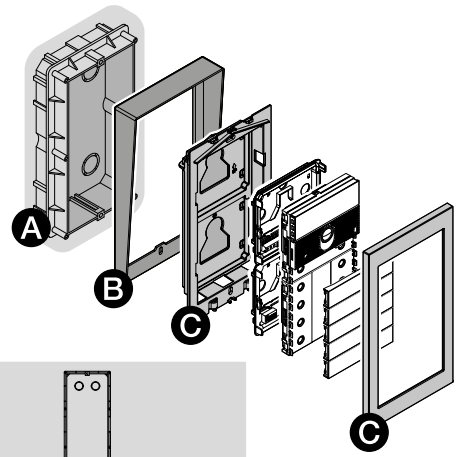
The entrance panel is available in flush-mounted or wall-mounted variants:

## FLUSH-MOUNTED INSTALLATION COMPOSITION TABLE

A = Flush-mounted box

B = Rain shield #

C = Flush-mounted frame with frame

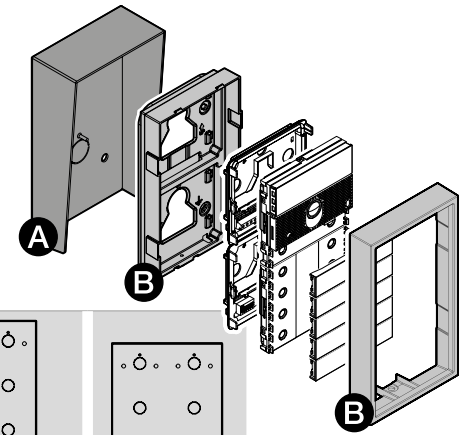


Flush-mounted box	3110/1A	3110/2A	3110/3A	3110/4A				
Rain shield	UT9181 UT9181B UT9181W	UT9182 UT9182B UT9182W	UT9184H	UT9183 UT9183B UT9183W	UT9186	UT9189	UT9184 UT9184B UT9184W	UT9188
Frame/frame	UT9161 UT9161B UT9161W	UT9162 UT9162B UT9162W	UT9163 UT9163B UT9163W	UT9164 UT9164B UT9164W				

## WALL INSTALLATION COMPOSITION TABLE

A = Rain shield #

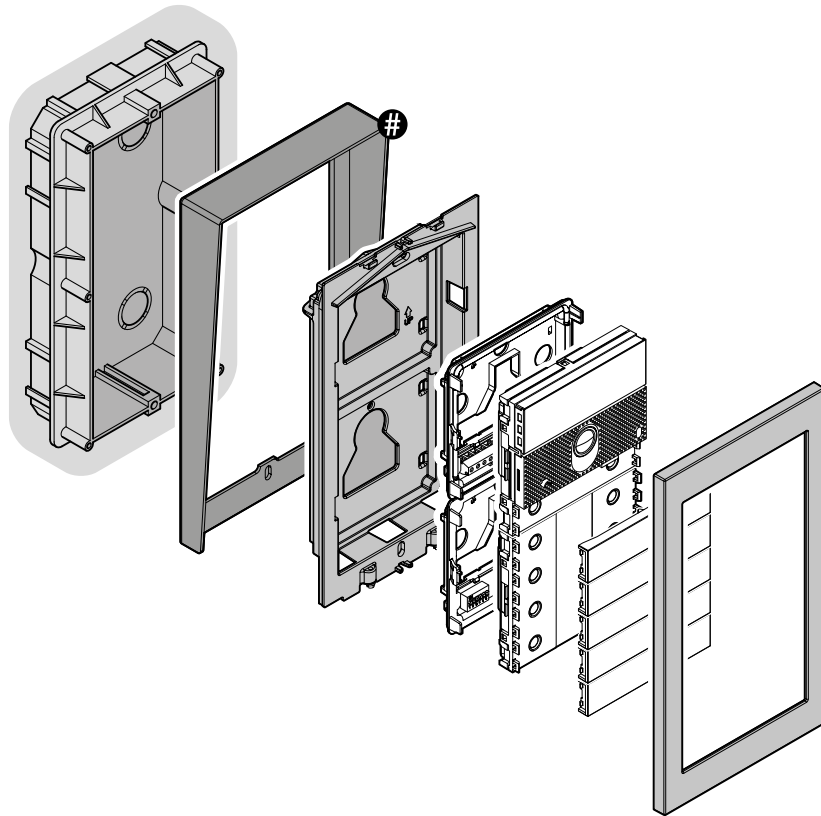
B = Wall-mounted case with frame



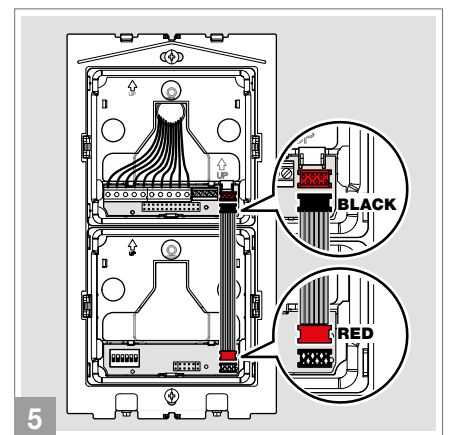
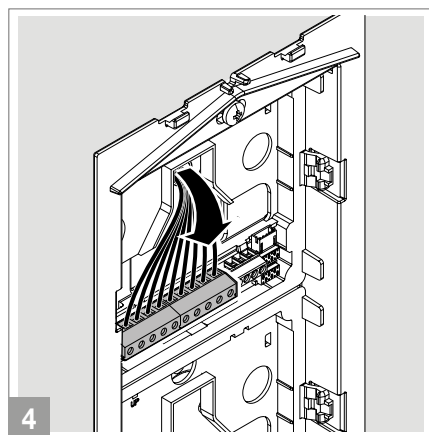
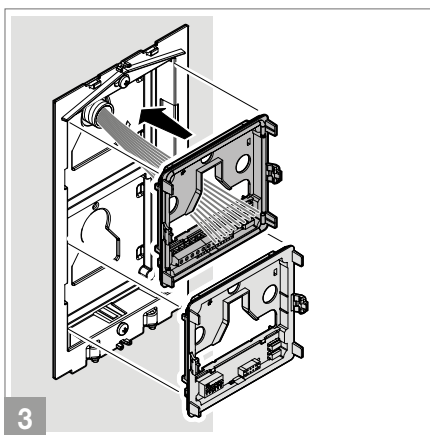
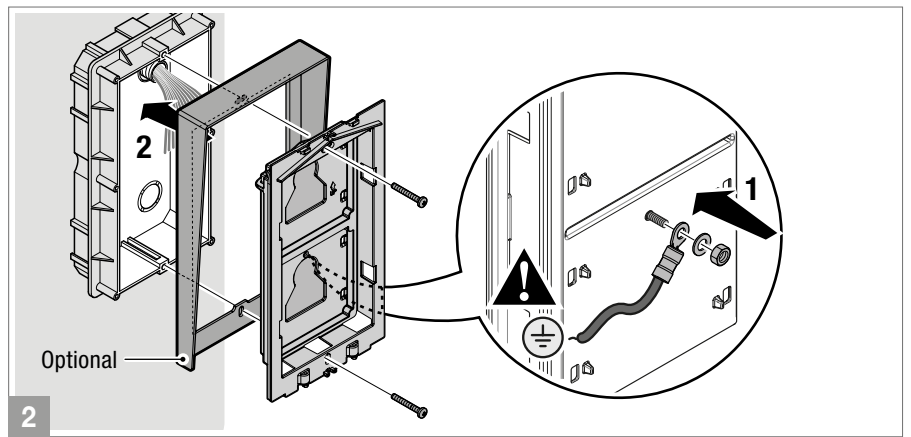
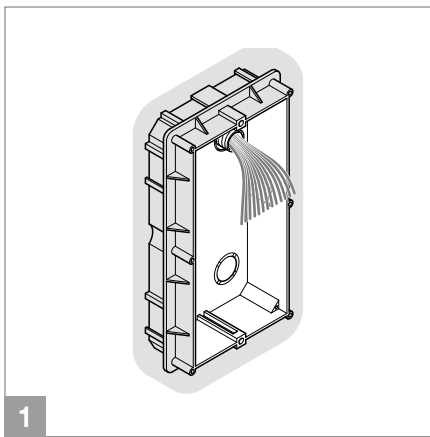
Rain shield	UT9191 UT9191B UT9191W	UT9192 UT9192B UT9192W	UT9194H	UT9193 UT9193B UT9193W	UT9196	UT9199	UT9194 UT9194B UT9194W	UT9198
Case/frame	UT9171 UT9171B UT9171W	UT9172 UT9172B UT9172W	UT9174H	UT9173 UT9173B UT9173W	UT9176	UT9179	UT9174 UT9174B UT9174W	UT9178

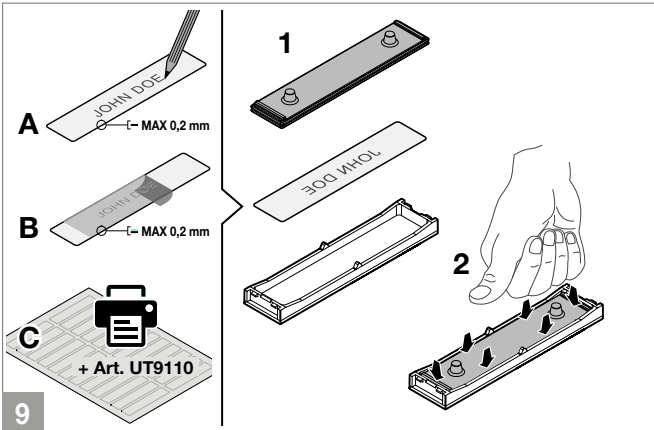
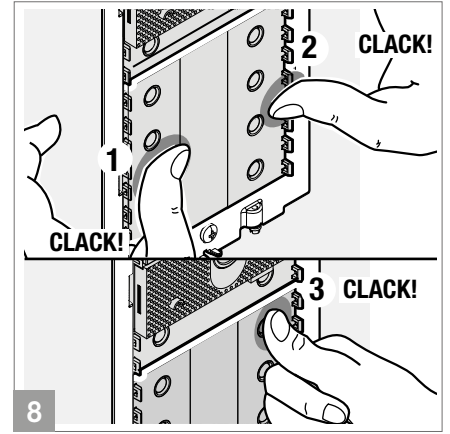
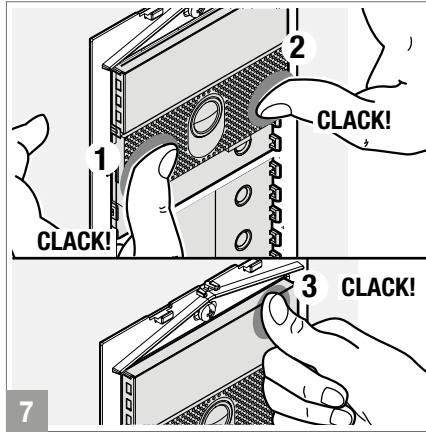
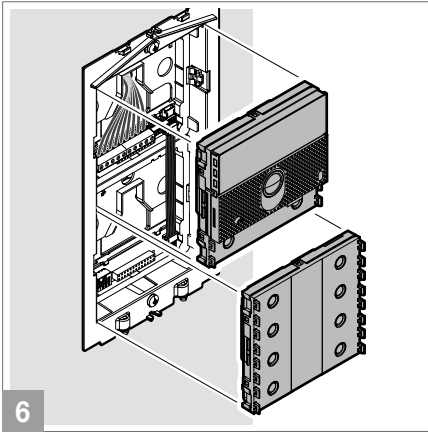
# Optional

# Flush-mounted installation



# Optional

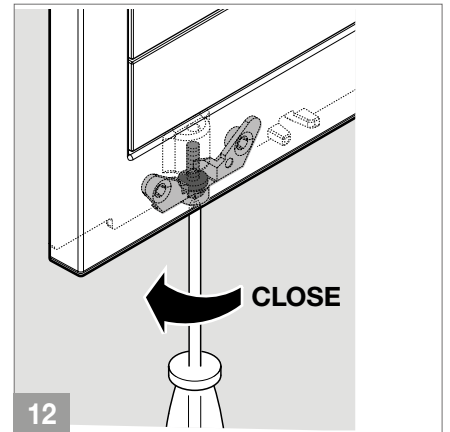
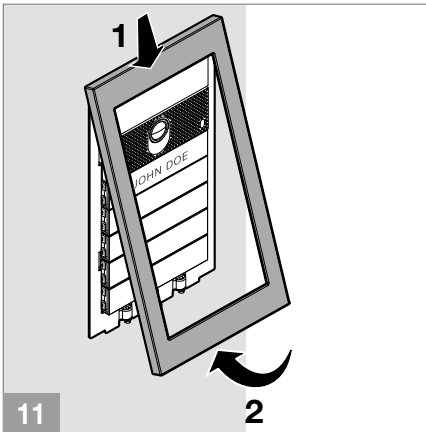
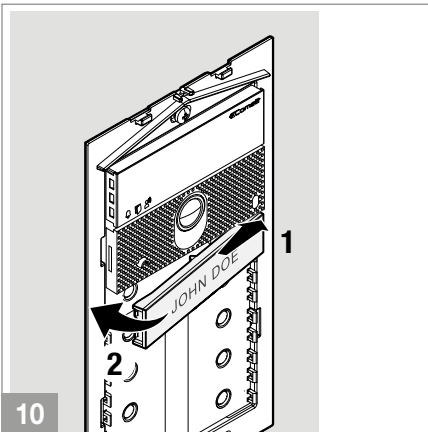




The button is equipped with a name tag on which you can write directly (A), or apply an adhesive label (B).  
**The total thickness of the name tag + adhesive label must not exceed 0.2 mm.**

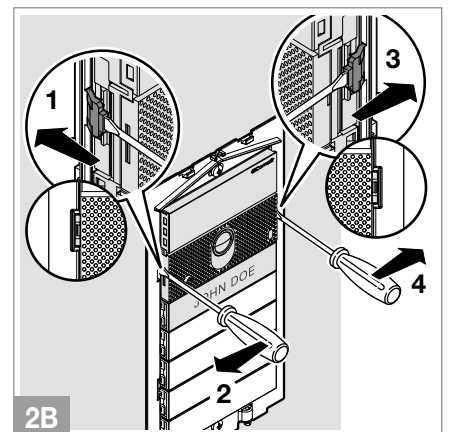
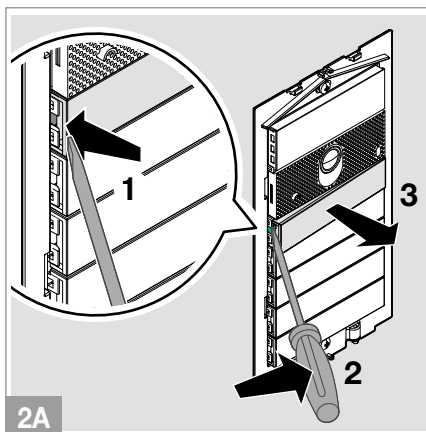
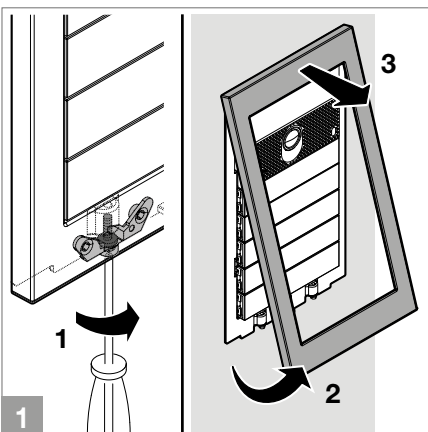
You can download from the website [pro.comelitgroup.com](http://pro.comelitgroup.com) the PDF for printing the entrance panel labels, using the pre-cut sheets (C) available in our catalogue (art. UT9110 ★)

Upon request, it is possible to order custom engraving of the **Full Metal Ultra** tags. Find out how at: <https://pro.comelitgroup.com/it-it/cartellini-personalizzati-ultra>

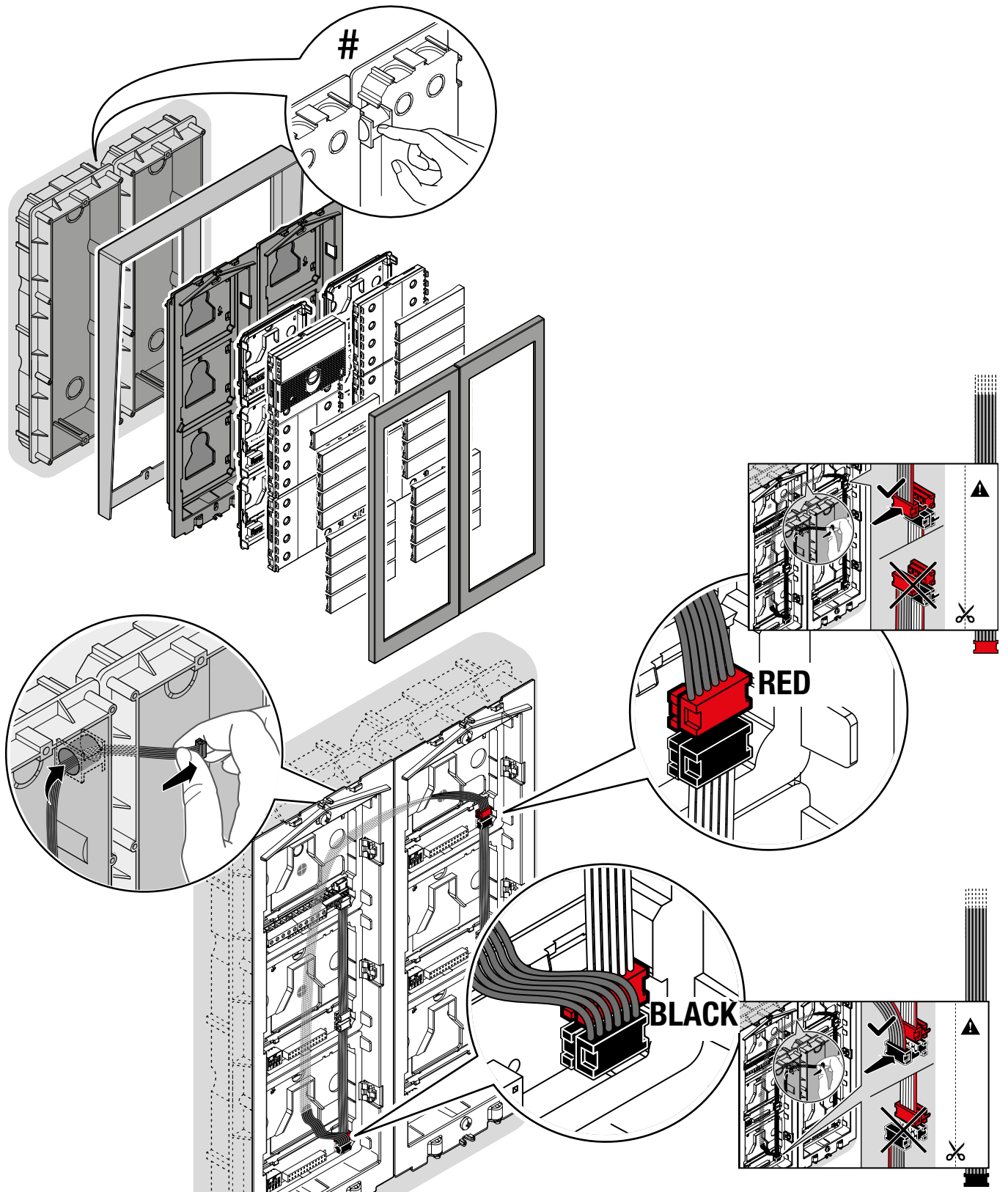


★ The kit art. **UT9110** contains 5 sheets of pre-cut labels for the name tags and 1 sheet for the information module. The sheets are made of Yupo material, which ensures maximum transparency and long-term resistance to atmospheric agents. For printing the labels, use the editable .pdf file available for free download from the website [pro.comelitgroup.com](http://pro.comelitgroup.com)

### Removal of name tag labels (2A) /module (2B)

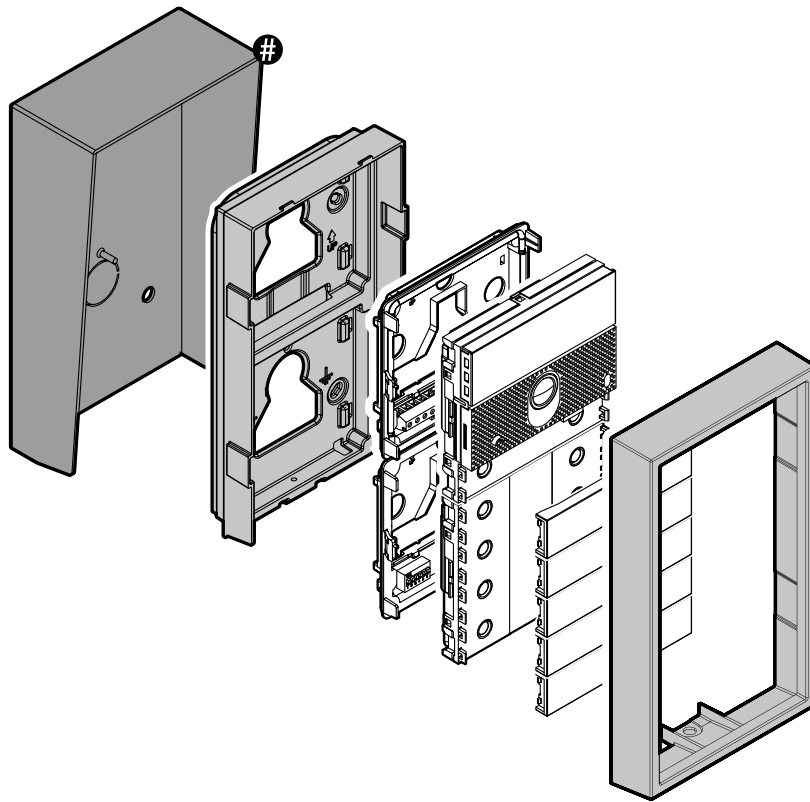


## Installation with adjacent flush-mounted boxes

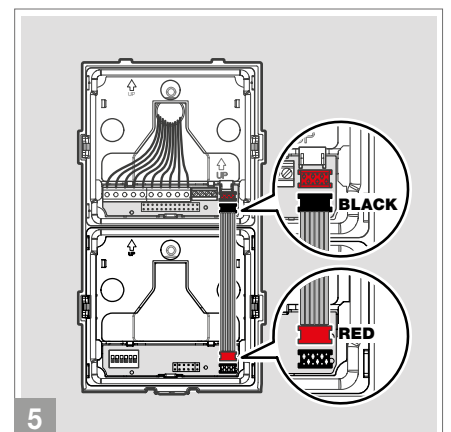
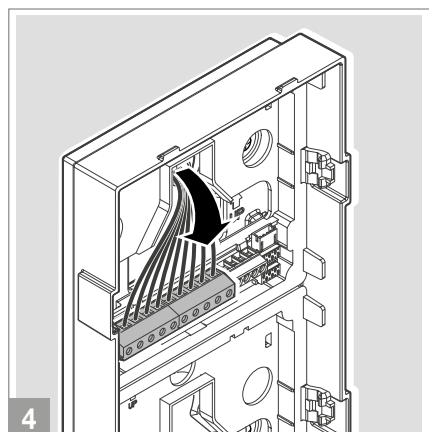
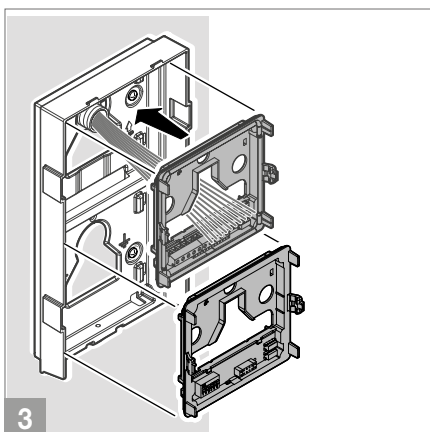
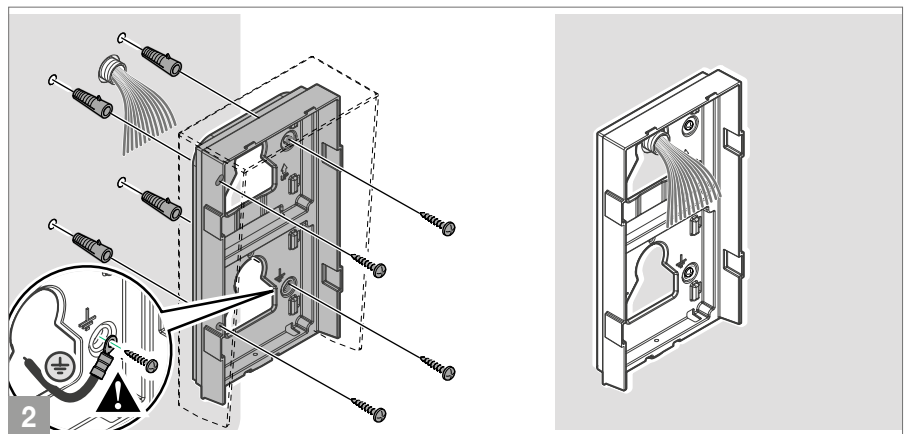
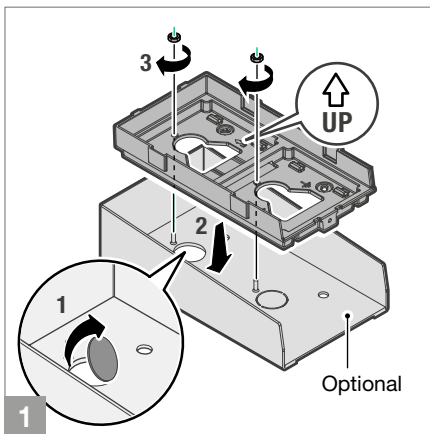


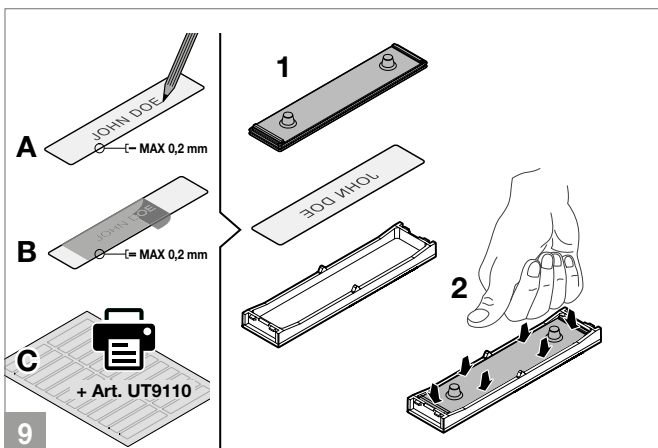
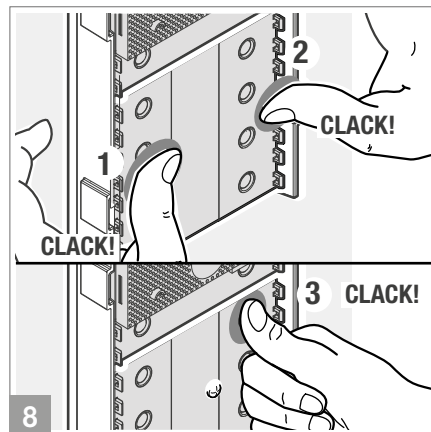
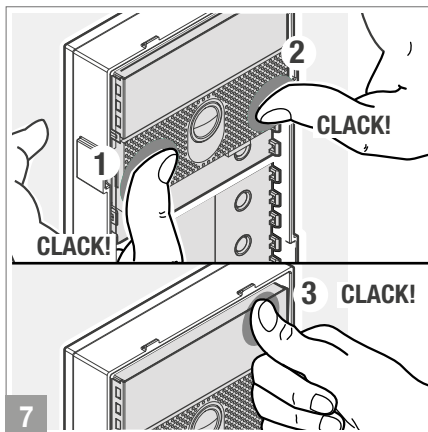
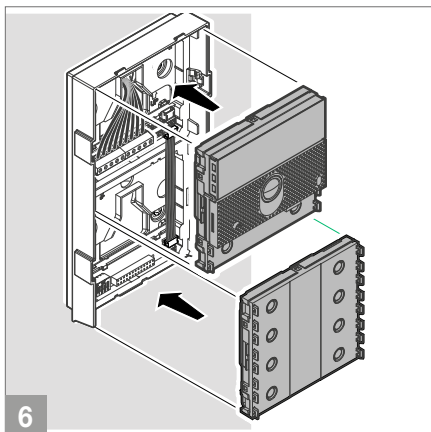
# Before embedding the boxes, insert the spacers.

# Wall-mounted installation



# Optional



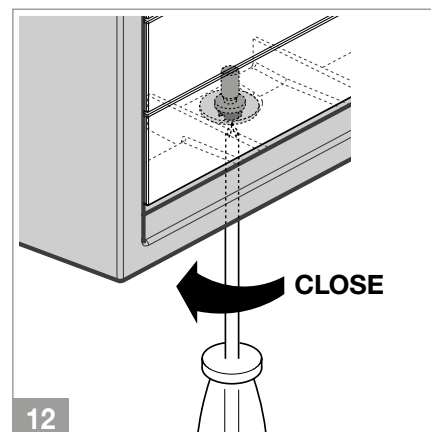
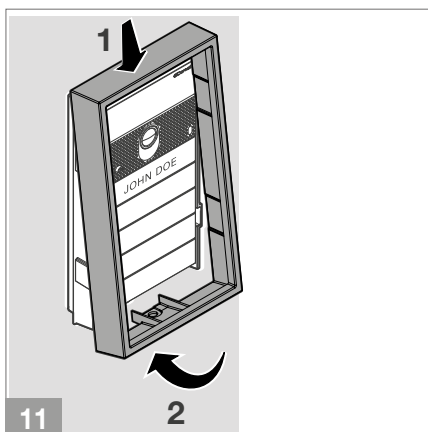
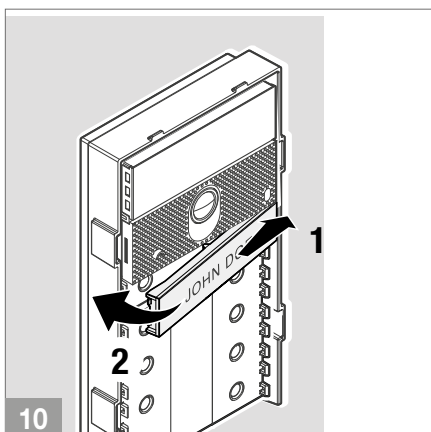


The button is equipped with a name tag on which you can write directly (A), or apply an adhesive label (B).

**The total thickness of the name tag + adhesive label must not exceed 0.2 mm.**

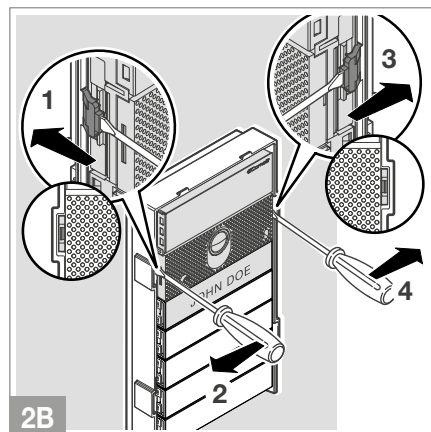
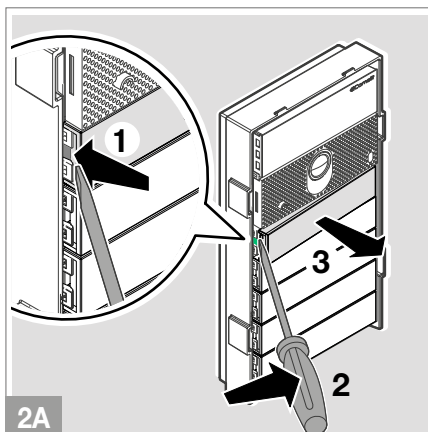
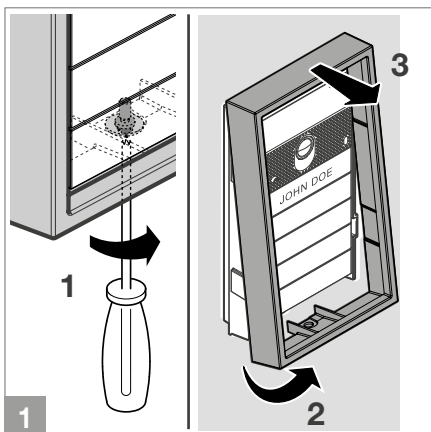
You can download from the website [pro.comelitgroup.com](https://pro.comelitgroup.com) the PDF for printing the entrance panel labels, using the pre-cut sheets (C) available in our catalogue (art. UT9110 ★)

Upon request, it is possible to order custom engraving of the Full Metal Ultra tags. Find out how at: <https://pro.comelitgroup.com/it-it/cartellini-personalizzati-ultra>

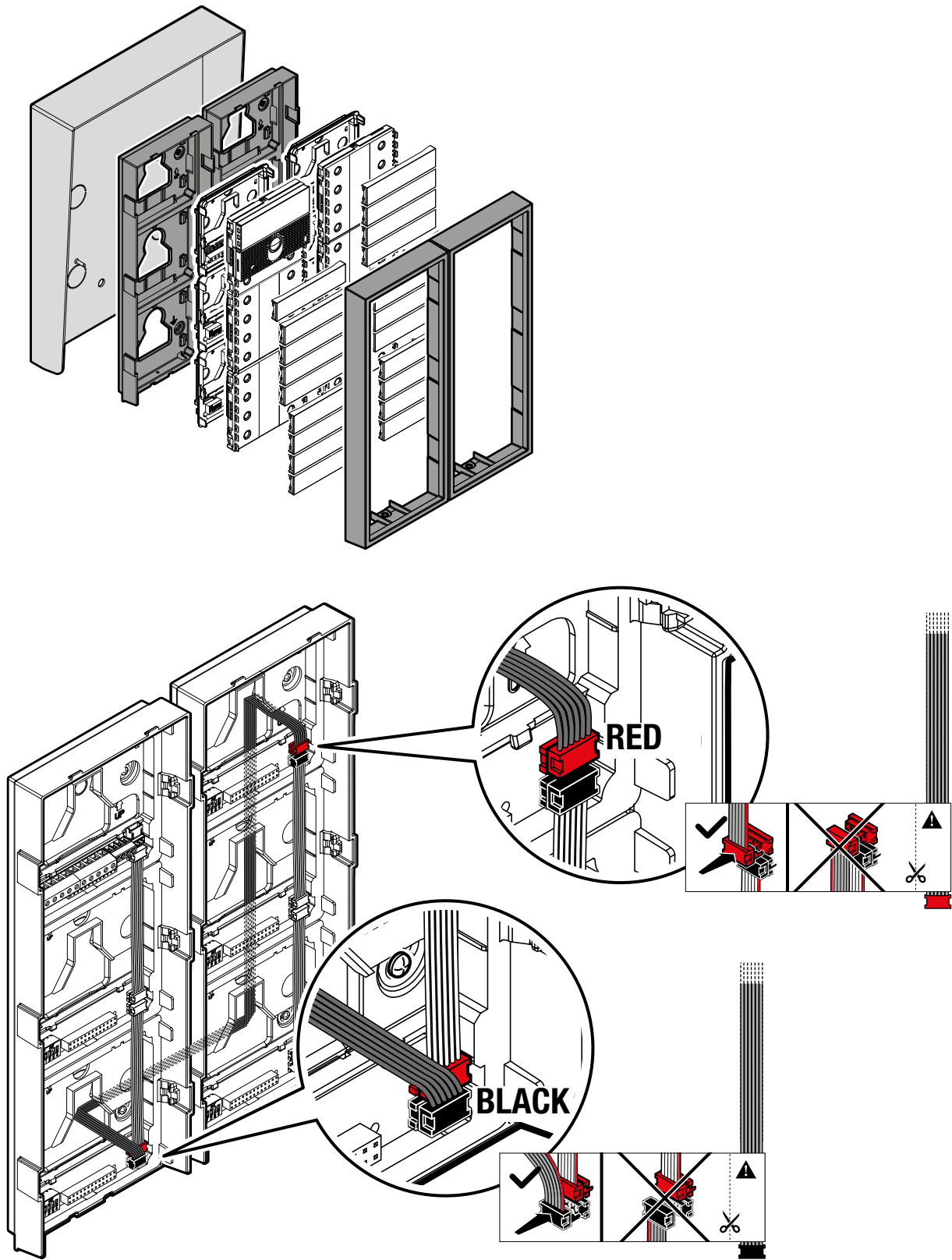


★ The kit art. **UT9110** contains 5 sheets of pre-cut labels for the name tags and 1 sheet for the information module. The sheets are made of Yupo material, which ensures maximum transparency and long-term resistance to atmospheric agents. For printing the labels, use the editable .pdf file available for free download from the website [pro.comelitgroup.com](https://pro.comelitgroup.com)

### Removal of name tag labels (2A) /module (2B)



# Installation with adjacent wall-mounted housings



# Module connections

On systems with art. UT2020/UT2010VC and power supply unit art. 1210/1210A, the available power for the outdoor entrance panel modules is MAX 3.3 W.

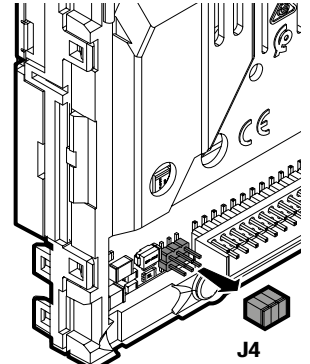
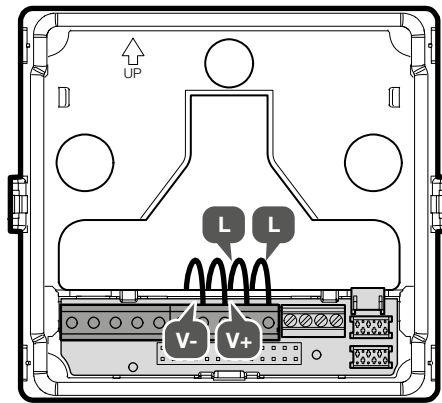
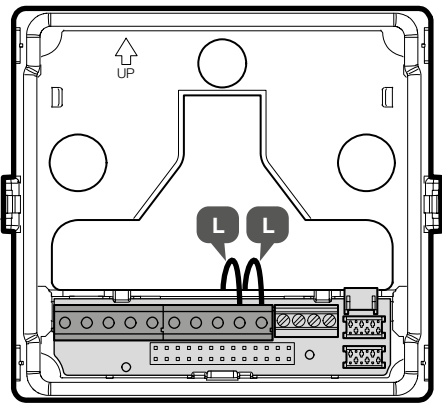


Based on your system configuration, calculate the total power consumption of the modules using the consumption table.

If the total power consumption of the modules exceeds 3.3 W, connect an additional power supply unit (art. 1595) to the V+ V- contacts of the outdoor entrance panel, as shown in the following figure (see “Connection with separate power supply”). In any case, the total power consumption must be less than 16.5 W.

**A** power supply with art. 1210/1210A

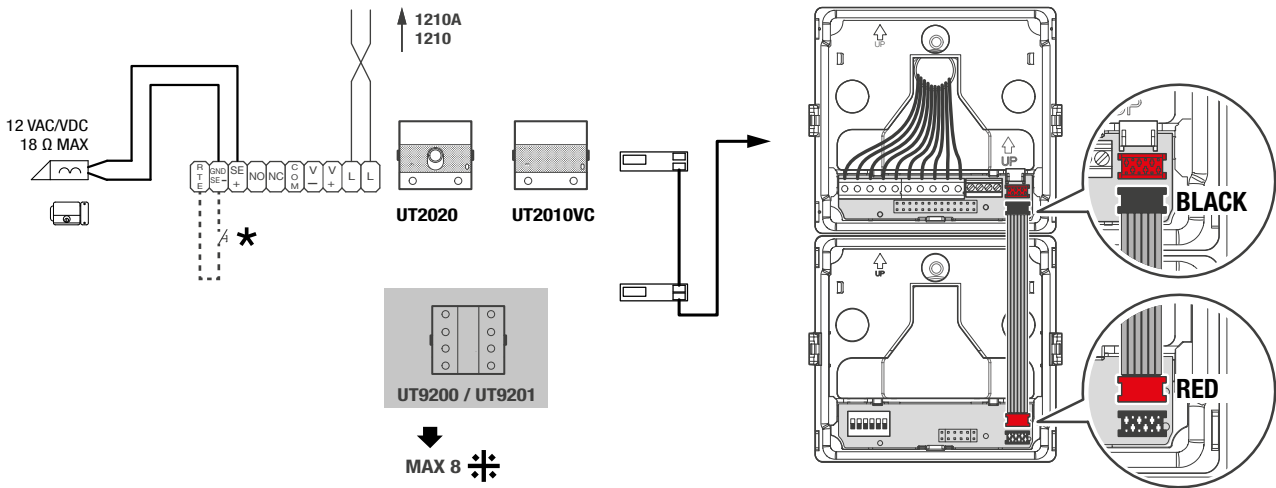
**B** power supply with additional power supply unit art. 1595



## Consumption table of the outdoor entrance panel modules

	Code		Power consumption (W)	
	<b>UT9200</b> <b>UT9201</b>	Call button module	0.41	
	<b>UT9240</b>	Information module	0.41	
	<b>UT9240M</b>	Metal information module	0.41	
	<b>UT9279M</b>	Numeric keypad module	1.32	Inactive relays and use of SE output of the audio or audio/video module
			2.47	With 1 active bistable relay
			3.3	With 2 bistable relays active simultaneously
	<b>UT9310M</b>	Magnetic induction module	8.1	Always requires additional power supply unit art. 1595
	<b>UT9270</b>	Touch screen module	3.3	In systems with an external entrance panel consisting of 1 audio or audio/video module, Touch module art. UT9270 and up to 80 users, no additional power supply is required.  For all other combinations, provide an additional power supply unit art. 1595
	<b>UT9260M</b>	Digital directory module	1.98	

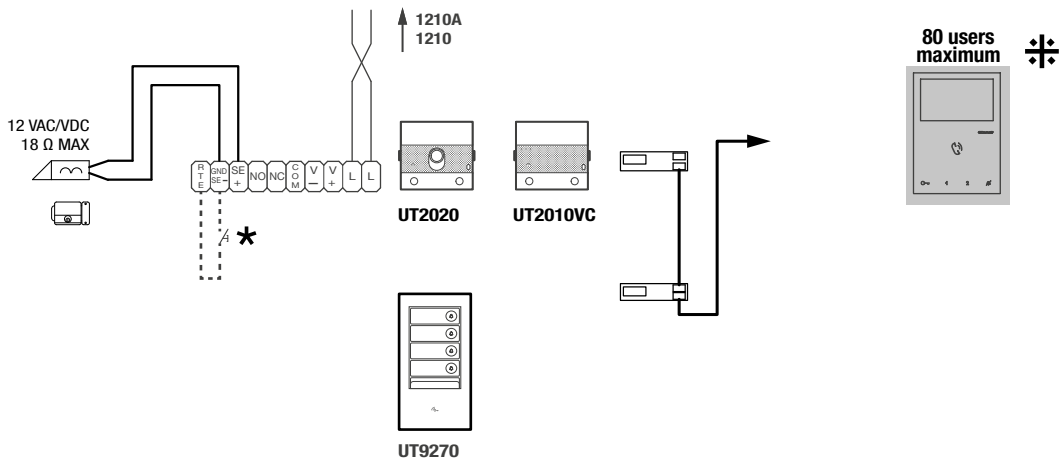
**CONNECTION OF BUTTON MODULES ART. UT9200**



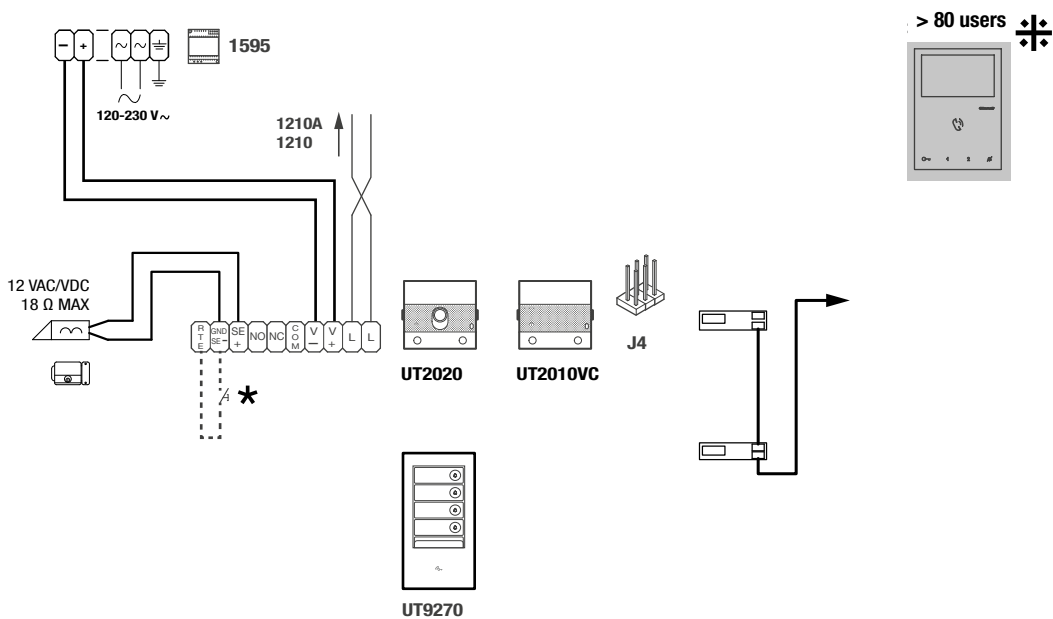
★ Max 20 m. Local door-opener button.

‡Max 8 modules (Max 30 modules with additional power supply).

**CONNECTION OF TOUCH SCREEN MODULE ART. UT9270**



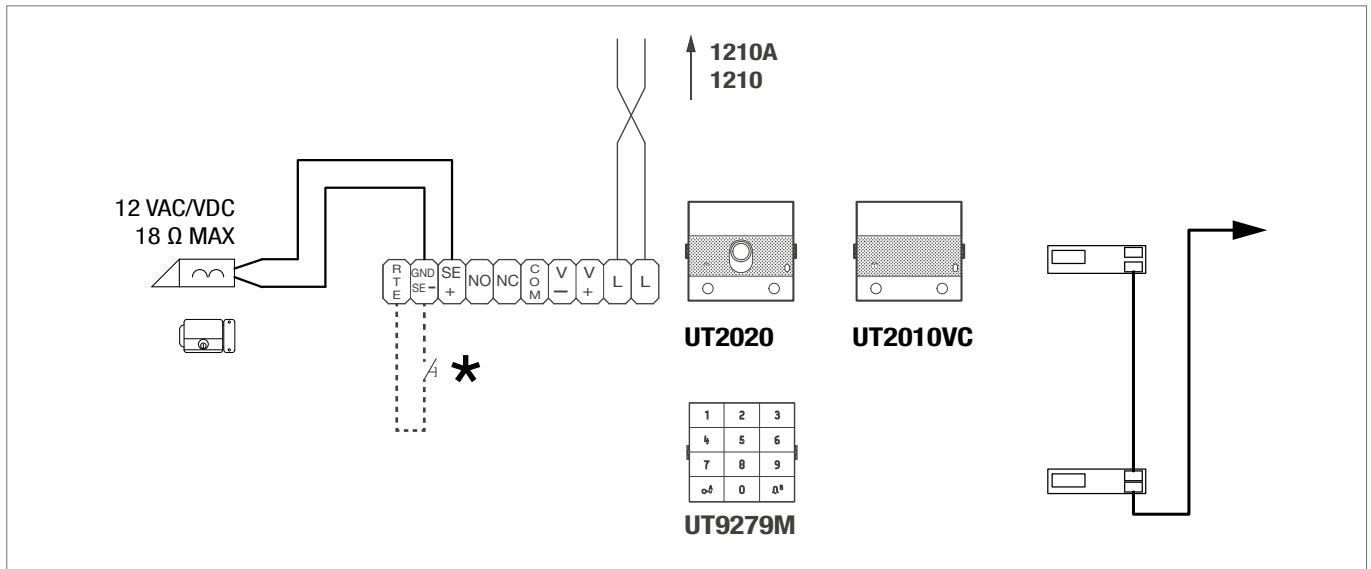
**Variant with separate power supply**



★ Max 20 m. Local door-opener button.

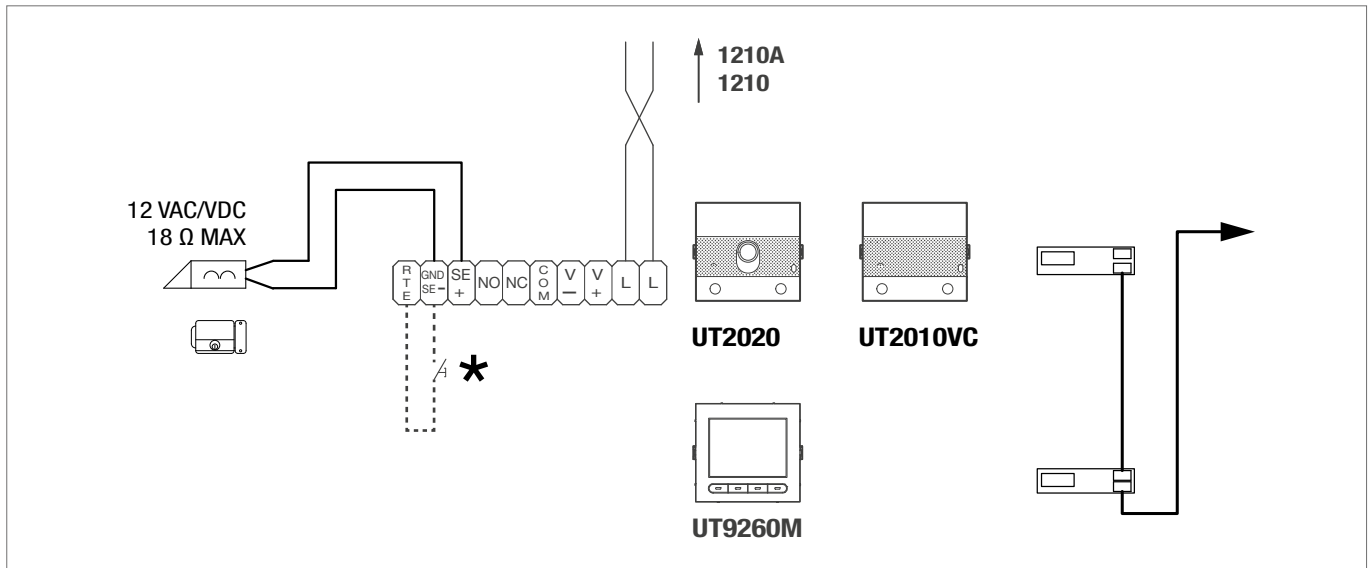
‡For systems with more than 80 users, provide additional power supply

**CONNECTION OF NUMERIC KEYPAD MODULE ART. UT9279M**



★ Max 20 m. Local door-opener button.

**CONNECTION OF DIGITAL DIRECTORY MODULE ART. UT9260M**



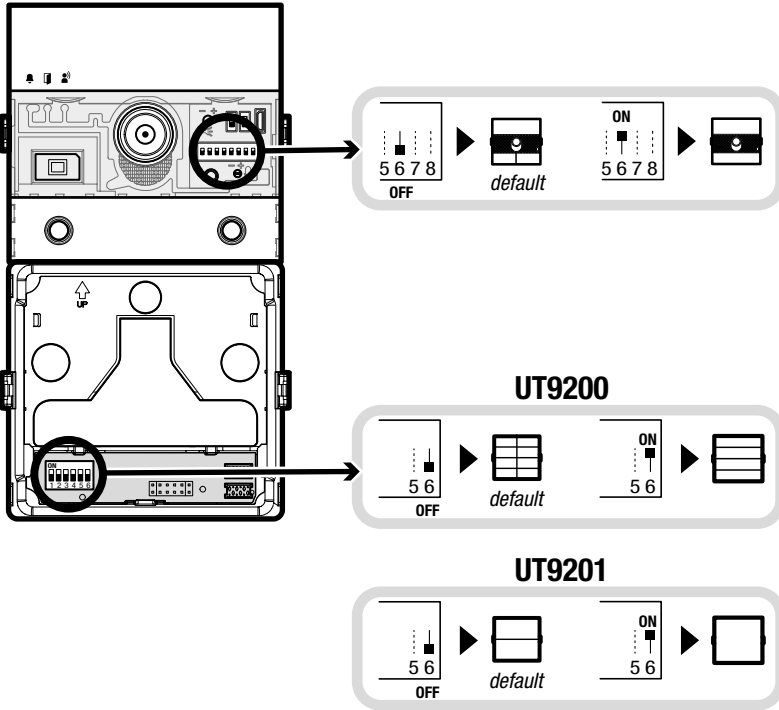
★ Max 20 m. Local door-opener button.

# Programming

For correct programming, follow the following instructions in order

- I. Button type setting
- II. Addressing of button modules
- III. Programming of user codes

## I Button type configuration to be maintained in normal operation (single/double) art. UT9200 (double height/wide) art. UT9201



**DIP 6:** button type setting:  
Single button (DIP6 ON).  
Dual button (DIP6 OFF, default).

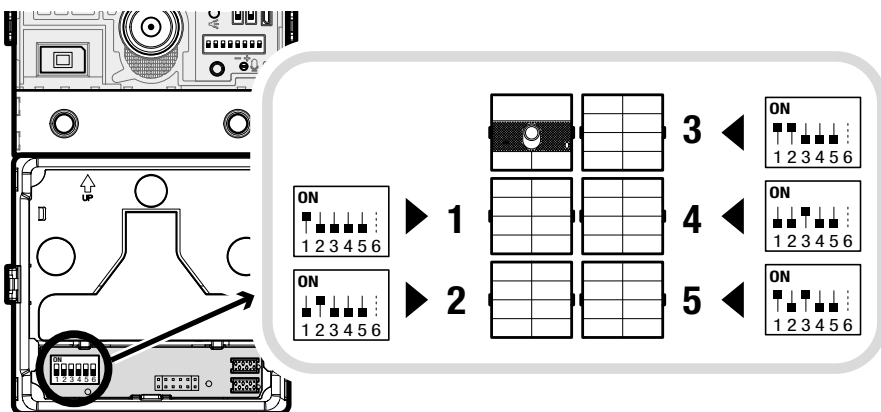
**DIP 6:** button type setting:  
Single button (DIP6 ON).  
Dual button (DIP6 OFF, default).

**DIP 6:** button type setting:  
Wide button (DIP6 ON).  
Double-height button (DIP6 OFF, default).

## II Addressing button modules

**DIP 1-5:** addressing of call button module (see TAB. A)

The addressing of the call button modules allows, in case of replacement, not to reprogram the user codes associated with the buttons. It is sufficient to assign the new module the same address as the previous one.



**TAB. A**

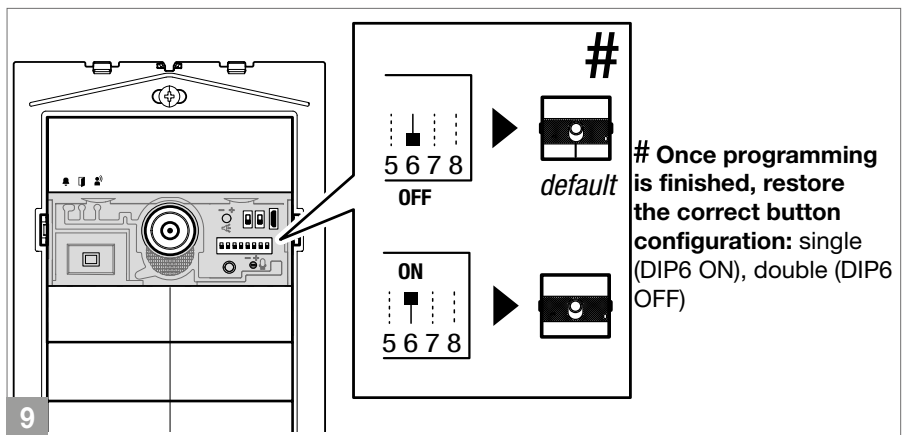
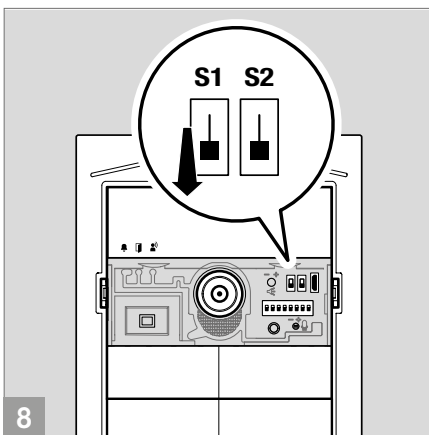
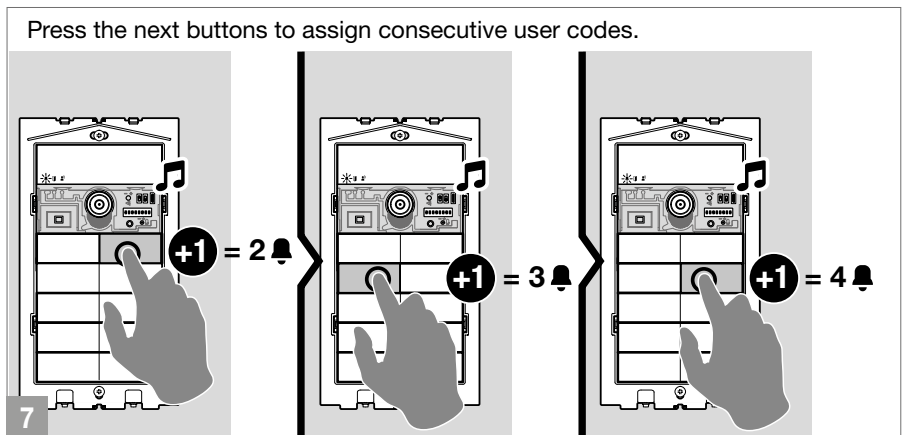
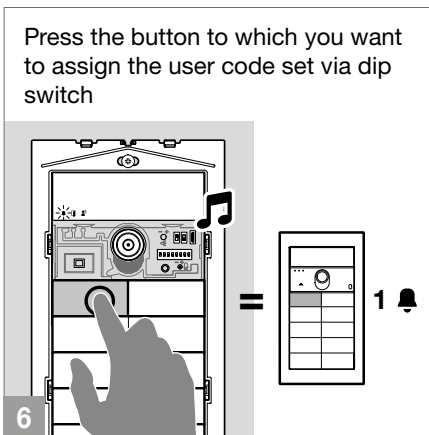
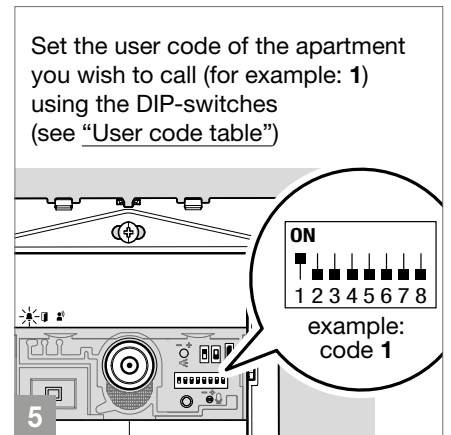
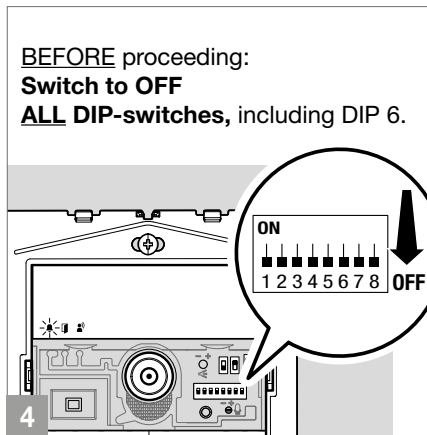
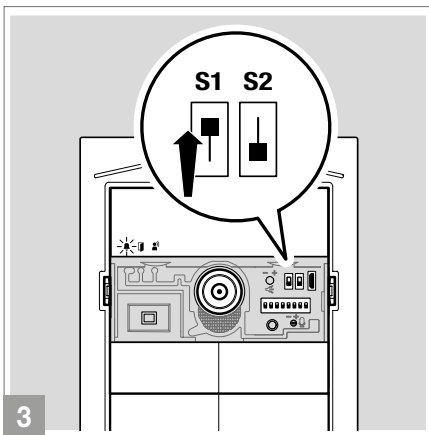
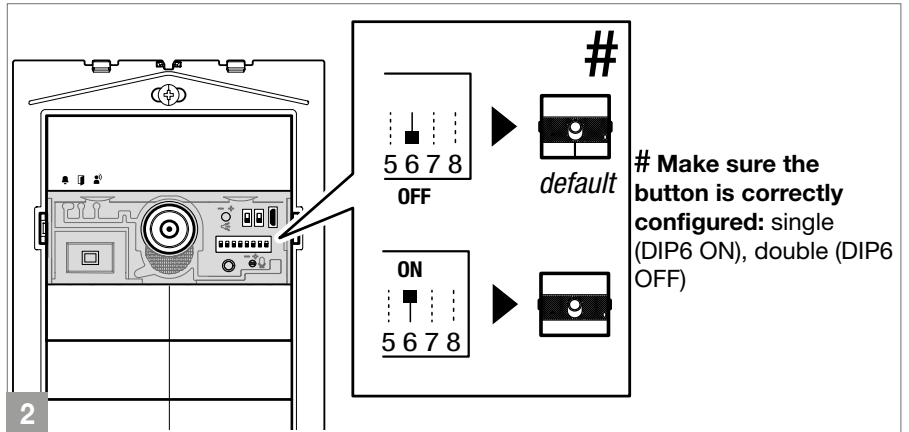
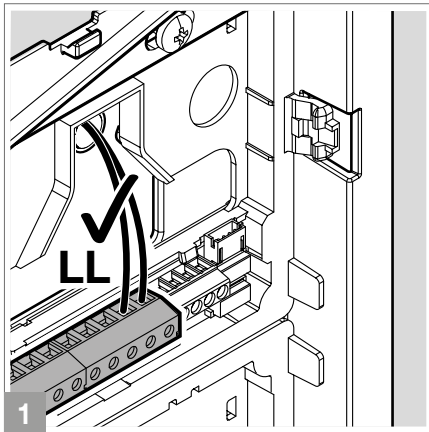
code	DIP ON				
1	1	12	3,4	23	1,2,3,5
2	2	13	1,3,4	24	4,5
3	1,2	14	2,3,4	25	1,4,5
4	3	15	1,2,3,4	26	2,4,5
5	1,3	16	5	27	1,2,4,5
6	2,3	17	1,5	28	3,4,5
7	1,2,3	18	2,5	29	1,3,4,5
8	4	19	1,2,5	30	2,3,4,5
9	1,4	20	3,5	31	1,2,3,4,5
10	2,4	21	1,3,5		
11	1,2,4	22	2,3,5		

## III Programming user codes

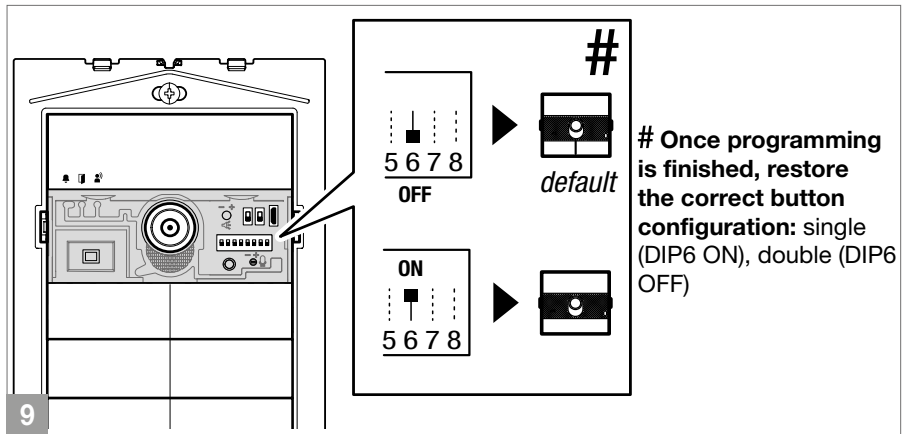
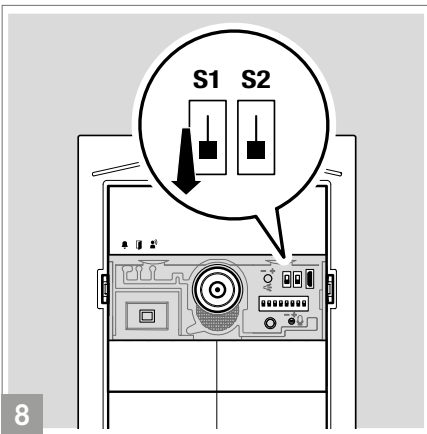
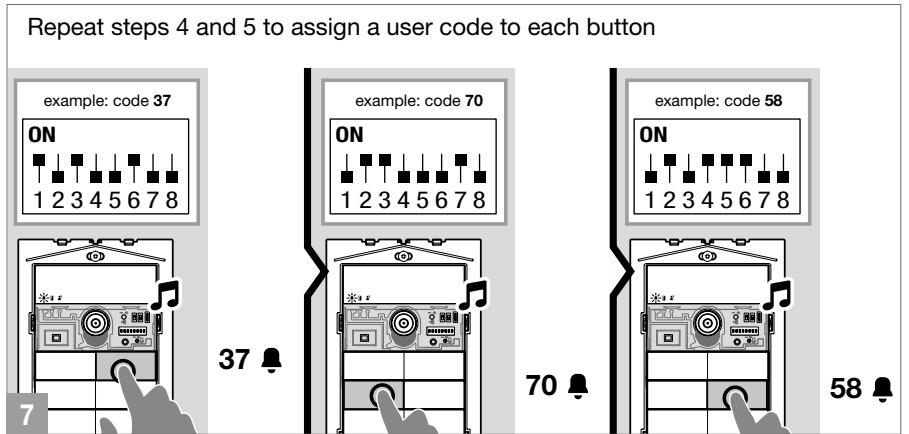
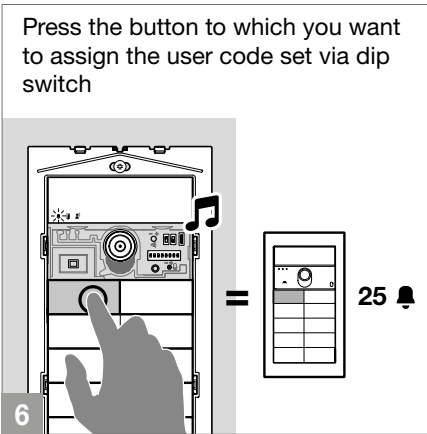
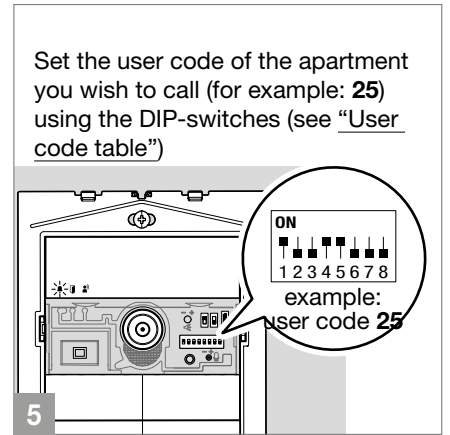
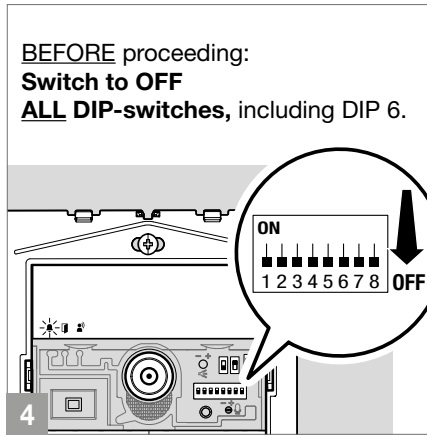
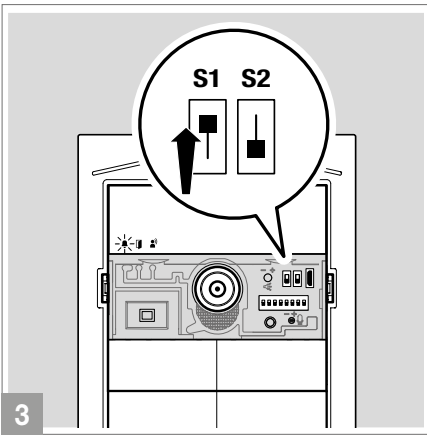
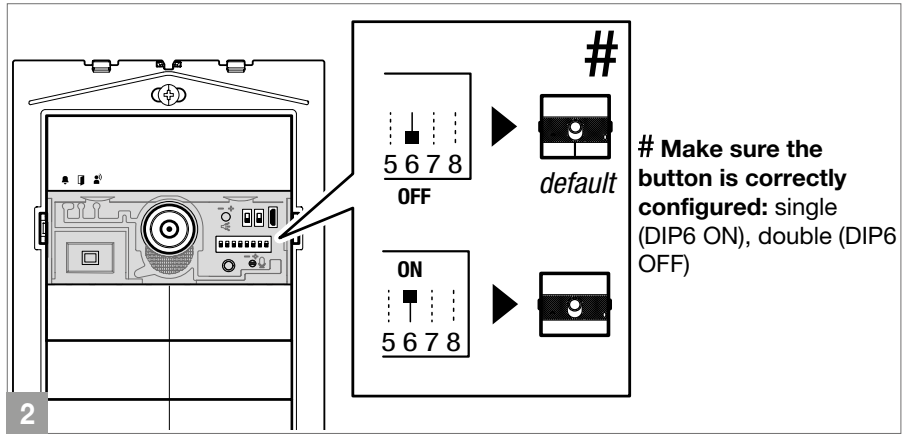
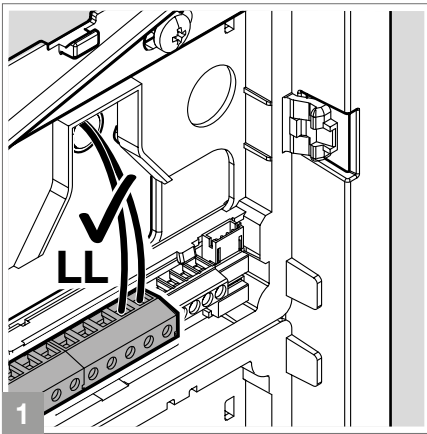
There are 2 programming modes:

- “Smart programming of consecutive user codes” allows rapid programming of buttons with consecutive user codes (for example: 1, 2, 3, 4)
- “Programming specific user codes” allows programming of specific user codes (for example: 25, 37, 70, 58)

# Smart programming of consecutive user codes



# Programming specific user codes



# User code table

Code	DIP-switch ON										
1	1	41	1,4,6	81	1,5,7	121	1,4,5,6,7	161	1,6,8	201	1,4,7,8
2	2	42	2,4,6	82	2,5,7	122	2,4,5,6,7	162	2,6,8	202	2,4,7,8
3	1,2	43	1,2,4,6	83	1,2,5,7	123	1,2,4,5,6,7	163	1,2,6,8	203	1,2,4,7,8
4	3	44	3,4,6	84	3,5,7	124	3,4,5,6,7	164	3,6,8	204	3,4,7,8
5	1,3	45	1,3,4,6	85	1,3,5,7	125	1,3,4,5,6,7	165	1,3,6,8	205	1,3,4,7,8
6	2,3	46	2,3,4,6	86	2,3,5,7	126	2,3,4,5,6,7	166	2,3,6,8	206	2,3,4,7,8
7	1,2,3	47	1,2,3,4,6	87	1,2,3,5,7	127	1,2,3,4,5,6,7	167	1,2,3,6,8	207	1,2,3,4,7,8
8	4	48	5,6	88	4,5,7	128	8	168	4,6,8	208	5,7,8
9	1,4	49	1,5,6	89	1,4,5,7	129	1,8	169	1,4,6,8	209	1,5,7,8
10	2,4	50	2,5,6	90	2,4,5,7	130	2,8	170	2,4,6,8	210	2,5,7,8
11	1,2,4	51	1,2,5,6	91	1,2,4,5,7	131	1,2,8	171	1,2,4,6,8	211	1,2,5,7,8
12	3,4	52	3,5,6	92	3,4,5,7	132	3,8	172	3,4,6,8	212	3,5,7,8
13	1,3,4	53	1,3,5,6	93	1,3,4,5,7	133	1,3,8	173	1,3,4,6,8	213	1,3,5,7,8
14	2,3,4	54	2,3,5,6	94	2,3,4,5,7	134	2,3,8	174	2,3,4,6,8	214	2,3,5,7,8
15	1,2,3,4	55	1,2,3,5,6	95	1,2,3,4,5,7	135	1,2,3,8	175	1,2,3,4,6,8	215	1,2,3,5,7,8
16	5	56	4,5,6	96	6,7	136	4,8	176	5,6,8	216	4,5,7,8
17	1,5	57	1,4,5,6	97	1,6,7	137	1,4,8	177	1,5,6,8	217	1,4,5,7,8
18	2,5	58	2,4,5,6	98	2,6,7	138	2,4,8	178	2,5,6,8	218	2,4,5,7,8
19	1,2,5	59	1,2,4,5,6	99	1,2,6,7	139	1,2,4,8	179	1,2,5,6,8	219	1,2,4,5,7,8
20	3,5	60	3,4,5,6	100	3,6,7	140	3,4,8	180	3,5,6,8	220	3,4,5,7,8
21	1,3,5	61	1,3,4,5,6	101	1,3,6,7	141	1,3,4,8	181	1,3,5,6,8	221	1,3,4,5,7,8
22	2,3,5	62	2,3,4,5,6	102	2,3,6,7	142	2,3,4,8	182	2,3,5,6,8	222	2,3,4,5,7,8
23	1,2,3,5	63	1,2,3,4,5,6	103	1,2,3,6,7	143	1,2,3,4,8	183	1,2,3,5,6,8	223	1,2,3,4,5,7,8
24	4,5	64	7	104	4,6,7	144	5,8	184	4,5,6,8	224	6,7,8
25	1,4,5	65	1,7	105	1,4,6,7	145	1,5,8	185	1,4,5,6,8	225	1,6,7,8
26	2,4,5	66	2,7	106	2,4,6,7	146	2,5,8	186	2,4,5,6,8	226	2,6,7,8
27	1,2,4,5	67	1,2,7	107	1,2,4,6,7	147	1,2,5,8	187	1,2,4,5,6,8	227	1,2,6,7,8
28	3,4,5	68	3,7	108	3,4,6,7	148	3,5,8	188	3,4,5,6,8	228	3,6,7,8
29	1,3,4,5	69	1,3,7	109	1,3,4,6,7	149	1,3,5,8	189	1,3,4,5,6,8	229	1,3,6,7,8
30	2,3,4,5	70	2,3,7	110	2,3,4,6,7	150	2,3,5,8	190	2,3,4,5,6,8	230	2,3,6,7,8
31	1,2,3,4,5	71	1,2,3,7	111	1,2,3,4,6,7	151	1,2,3,5,8	191	1,2,3,4,5,6,8	231	1,2,3,6,7,8
32	6	72	4,7	112	5,6,7	152	4,5,8	192	7,8	232	4,6,7,8
33	1,6	73	1,4,7	113	1,5,6,7	153	1,4,5,8	193	1,7,8	233	1,4,6,7,8
34	2,6	74	2,4,7	114	2,5,6,7	154	2,4,5,8	194	2,7,8	234	2,4,6,7,8
35	1,2,6	75	1,2,4,7	115	1,2,5,6,7	155	1,2,4,5,8	195	1,2,7,8	235	1,2,4,6,7,8
36	3,6	76	3,4,7	116	3,5,6,7	156	3,4,5,8	196	3,7,8	236	3,4,6,7,8
37	1,3,6	77	1,3,4,7	117	1,3,5,6,7	157	1,3,4,5,8	197	1,3,7,8	237	1,3,4,6,7,8
38	2,3,6	78	2,3,4,7	118	2,3,5,6,7	158	2,3,4,5,8	198	2,3,7,8	238	2,3,4,6,7,8
39	1,2,3,6	79	1,2,3,4,7	119	1,2,3,5,6,7	159	1,2,3,4,5,8	199	1,2,3,7,8	239	1,2,3,4,6,7,8
40	4,6	80	5,7	120	4,5,6,7	160	6,8	200	4,7,8	*240	5,6,7,8

\* Note: Code 240 is reserved for the porter switchboard

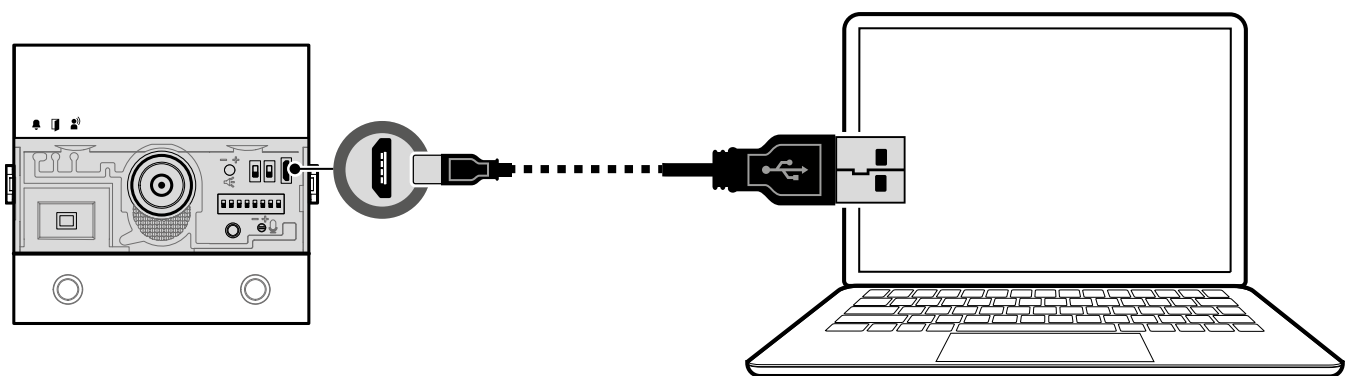
# Configuration via PC

All device settings can be made via PC and ViP Manager configuration software, downloadable free of charge from [pro.comelitgroup.com](http://pro.comelitgroup.com) ([See programming manual](#)).

For example:

- programming of user codes associated with the buttons
- activation of audiovisual signals
- backlighting adjustment and activation threshold of the twilight sensor
- setting of the functions assignable to the RTE input (lock-release, relay control, actuator control, etc.)
- setting of the activations assignable to the SE outputs and relay of the module

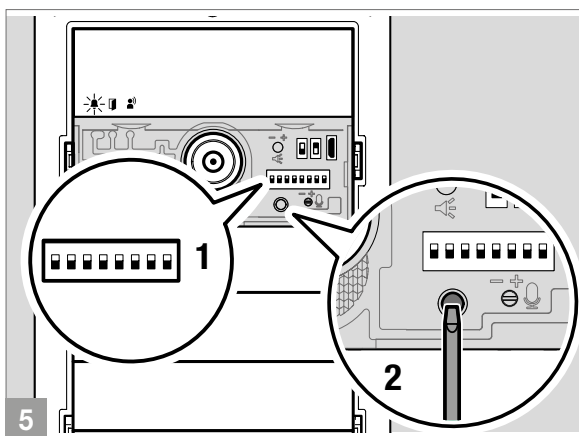
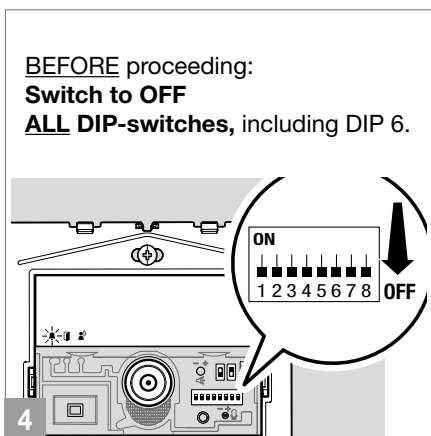
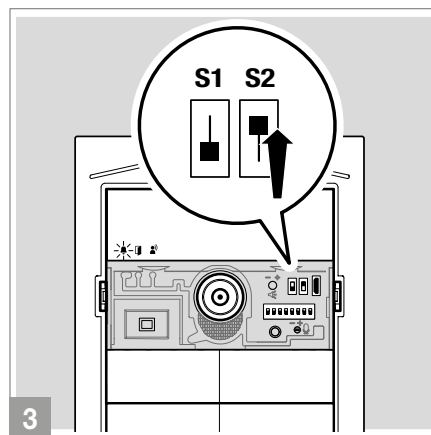
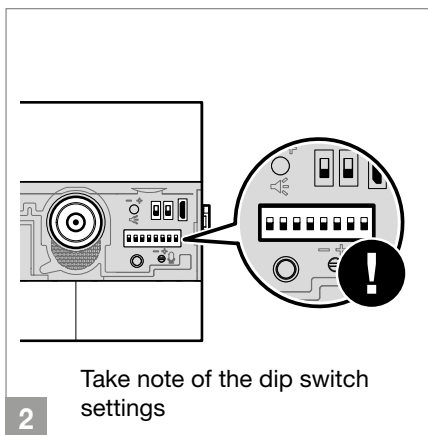
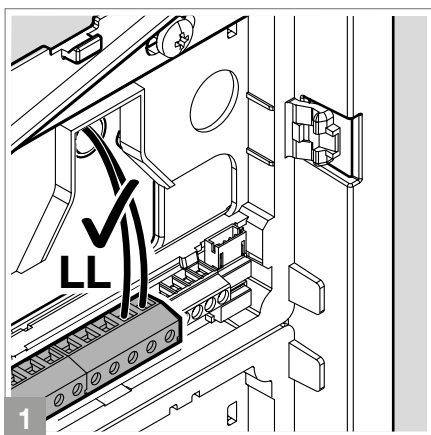
√ A micro-USB USB cable is required.



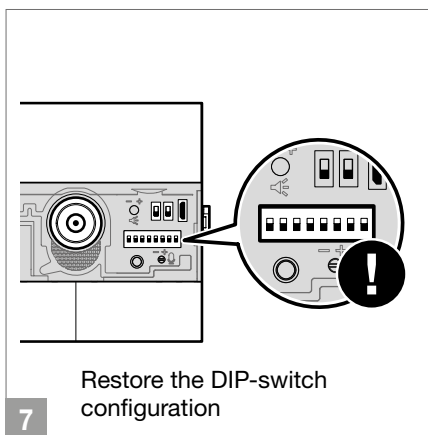
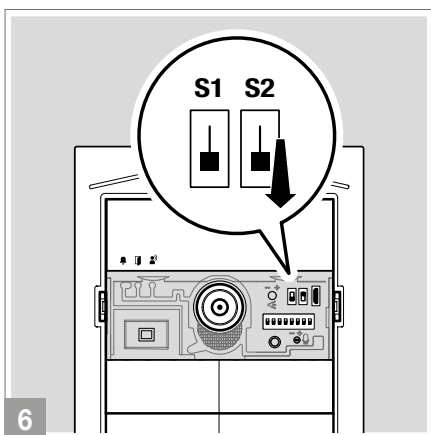
## Notifications and errors

	SIGNAL	SOLUTION
<b>LED 📢 steady red on</b> + <b>Deterrent tone</b>	Line short circuit	Check the wiring
	Presence of dual power supply	Remove jumper J4 on the audio/video module
	Button modules with the same ID	Check the IDs of the button modules
	Error in positioning of programming selectors	Check the position of selectors S1 and S2 (they cannot both be set to ON)
<b>LED 📢 flashing red</b>	Device in programming	

# Special programming via dip switch



1. Set the dip switches according to the function you want to program (see "Special programming table").
2. Press the confirm button.



## Special programming table

USER CODE	DIP SWITCH ON	FUNCTIONS
<b>Audio-visual messages</b>		
193	1,7,8	Czech
195	1,2,7,8	Hebrew
196	3,7,8	Polish
197	1,3,7,8	Catalan
198	2,3,7,8	Galician
199	1,2,3,7,8	Basque language
206	2,3,4,7,8	Danish
207	1,2,3,4,7,8	Norwegian
211	1,2,5,7,8	Swedish
215	1,2,3,5,7,8	Italian
216	4,5,7,8	French
217	1,4,5,7,8	Spanish
218	2,4,5,7,8	Dutch
219	1,2,4,5,7,8	Greek
220	3,4,5,7,8	English
221	1,3,4,5,7,8	German
222	2,3,4,5,7,8	Portuguese
226	2,6,7,8	Slovak
202	2,4,7,8	Enable the voice message (door open warning) when the RTE contact is closed
203	1,2,4,7,8	Disable the voice message (door open warning) when the RTE contact is closed <b>(default)</b>
210	2,5,7,8	Enable visual messages and disable voice messages <b>(default)</b>
214	2,3,5,7,8	OFF: disables voice messages and visual messages
<b>Activation of the relay of the audio/video module. N.B. art. 1256 must not be present in the system in generic actuator mode.</b>		
229	1,3,6,7,8	Relay activation C.NC.NO: 2 sec <b>(default)</b>
230	2,3,6,7,8	Activation of relay C.NC.NO: 4 sec
231	1,2,3,6,7,8	Activation of relay C.NC.NO: 8 sec
<b>Door lock</b>		
184	4,5,6,8	Door lock time: 100 msec
185	1,4,5,6,8	Door lock time: 200 msec
186	2,4,5,6,8	Door lock time: 500 msec
245	1,3,5,6,7,8	Door lock time: 2 sec + inactive tone <b>(default)</b>
246	2,3,5,6,7,8	Door lock time: 4 sec
247	1,2,3,5,6,7,8	Door lock time: 8 sec
248	4,5,6,7,8	Door lock confirmation tone: active
252	3,4,5,6,7,8	Lock-release always active <b>(default)</b>
253	1,3,4,5,6,7,8	Lock-release active only for called user
<b>System functions</b>		
232	4,6,7,8	Response waiting time: 60 sec <b>(default)</b>
233	1,4,6,7,8	Response waiting time: 120 sec
234	2,4,6,7,8	Response waiting time: 30 sec
235	1,2,4,6,7,8	Conversation time: 90 sec <b>(default)</b>
236	3,4,6,7,8	Conversation time: 180 sec

145	1,5,8	RTE input set as local door-opener button input <b>(default)</b>
146	2,5,8	RTE input set as door open signal
147	1,2,5,8	Self activation time: 60 sec <b>(default)</b>
149	1,3,5,8	Self activation time: 30 sec
237	1,3,4,6,7,8	Self activation: active <b>(default)</b>
238	2,3,4,6,7,8	Self activation: inactive
154	2,4,5,8	Busy signal time: 10 sec <b>(default)</b>
155	1,2,4,5,8	Busy signal time: 300 sec
239	1,2,3,4,6,7,8	User call confirmation tone: active <b>(default)</b>
240	5,6,7,8	User call confirmation tone: inactive
243	1,2,5,6,7,8	Reset waiting time (after hang-up or after lock-release): 10 sec <b>(default)</b>
244	3,5,6,7,8	Reset waiting time (after hang-up or after lock-release): 1 sec
208	5,7,8	Enable the “reset waiting” time on lock-release command <b>(default)</b>
209	1,5,7,8	Disable the “reset waiting time” on lock-release command (the response waiting time or conversation time will be executed)
249	1,4,5,6,7,8	Call sending: single <b>(default)</b>
250	2,4,5,6,7,8	Call sending: triple
183	1,2,3,5,6,8	Send audio call
182	2,3,5,6,8	Video call sending <b>(default)</b>
138	2,4,8	Enable switchboard call TOP
139	1,2,4,8	Disable switchboard call TOP <b>(default)</b>
<b>Button tones</b>		
142	2,3,4,8	Button press tone ON <b>(default)</b>
143	1,2,3,4,8	Button press tone OFF
<b>Button backlighting management</b>		
158	2,3,4,5,8	OFF mode: button LEDs always off
159	1,2,3,4,5,8	ON mode: button LEDs always on
160	6,8	AUTO mode: button LEDs on at night and off during the day thanks to the twilight sensor <b>(default)</b>
161	1,6,8	Enable the brightness adjustment of the button LEDs. Press a button repeatedly for each module to individually vary the brightness intensity of the buttons (see: “Adjustment of the brightness intensity of the button leds and the camera illuminator”)
162	2,6,8	Light-me OFF <b>(default)</b>
163	1,2,6,8	Light-me ON: the button of the audio/video module has the LEDs always on and when pressed it turns on the LEDs of all the buttons (see: “Behavior of the Light me function depending on the led backlighting mode”)
150	2,3,5,8	Light-me time: 30 sec
151	1,2,3,5,8	Light-me time: 60 sec <b>(default)</b>
152	4,5,8	Light-me time: 120 sec
<b>Camera LED illuminator management on self activation (only with art. UT2020)</b>		
166	2,3,6,8	The led illuminator is always off on self activation
167	1,2,3,6,8	The LED illuminator copies the ON/OFF/AUTO mode set on call (functions 168/169/170) <b>(default)</b>

		<b>Camera LED illuminator management on call (only with art. UT2020)</b>
<b>168</b>	4,6,8	OFF mode: led illuminator always off on call
<b>169</b>	1,4,6,8	ON mode: led illuminator always on on call
<b>170</b>	2,4,6,8	AUTO mode: LED illuminator on at night and off during the day thanks to the twilight sensor <b>(default)</b>
<b>171</b>	1,2,4,6,8	Enable the brightness adjustment of the camera LED illuminator. Press the programming confirmation button repeatedly to vary the brightness intensity
		<b>Restore backup</b>
<b>114</b>	2,5,6,7	In case of replacement of the audio/video module, import all programming (available only if at least one additional module is connected via flat cable)
		<b>Reset</b>
<b>115</b>	1,2,5,6,7	<b>Button programming reset:</b> if the modules are addressed (see “Addressing button modules”) resets the user codes programmed on the buttons
<b>254</b>	2,3,4,5,6,7,8	<b>Special programming reset:</b> restores all the parameters described in this table to factory values

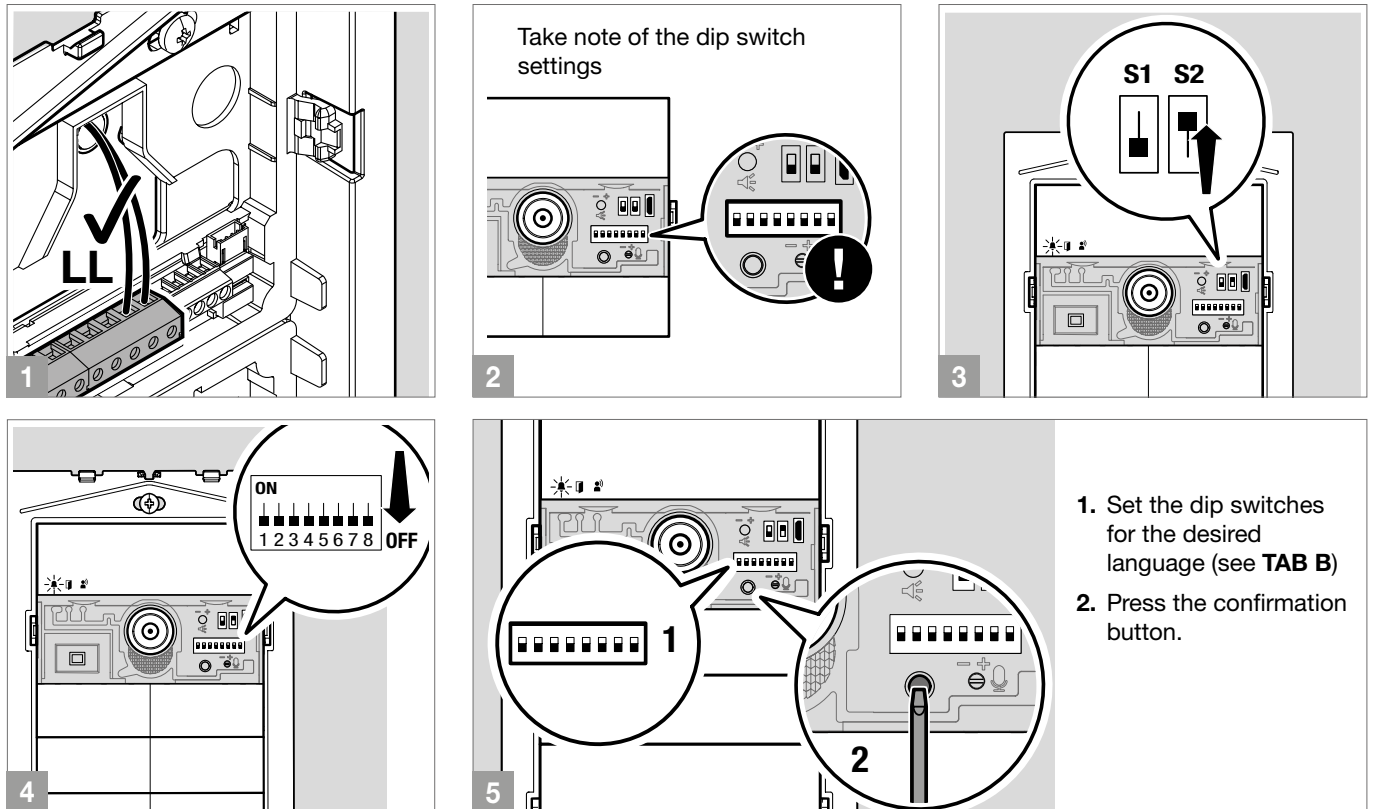
# Programming voice message language

The audio/video module can be configured to play voice messages that provide the user with immediate feedback on the action in progress.

Voice messages can be played:

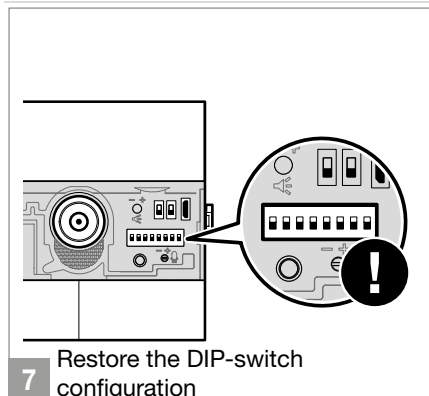
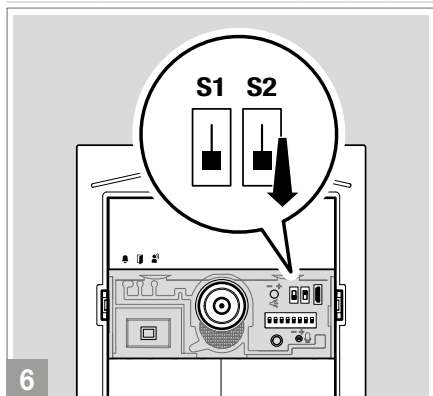
- in a single language, see: “Programming voice messages in a single language” on page 32.
- in dual language mode (for example first in Italian and then in English) see “Programming voice messages in two languages” on page 33.

## Programming voice messages in a single language



**TAB B**

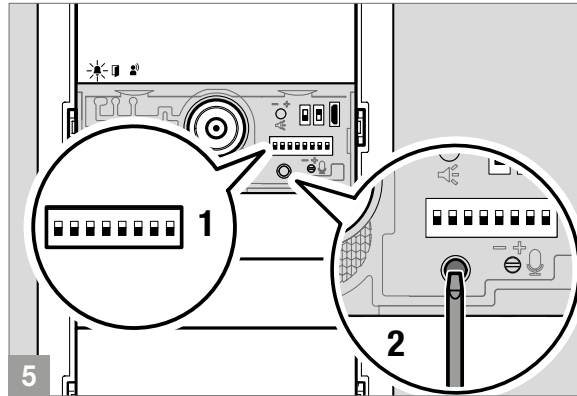
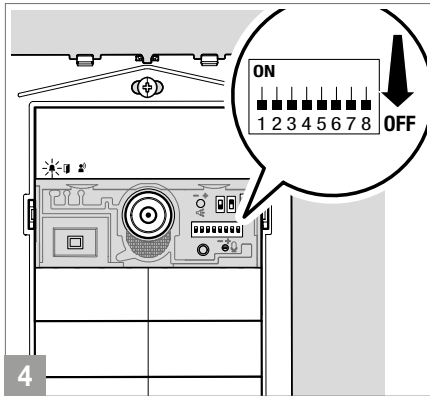
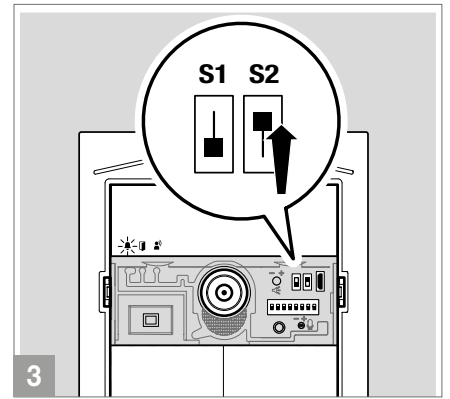
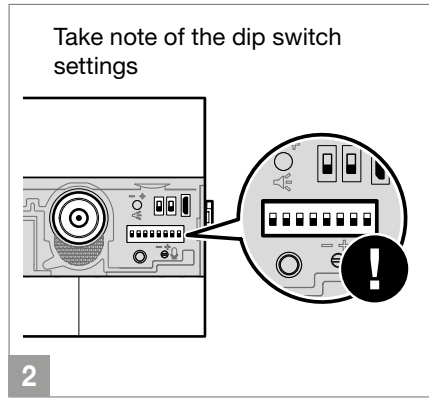
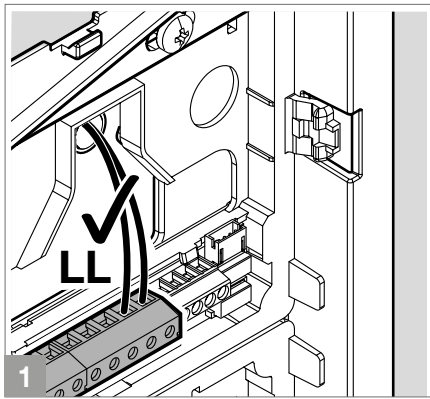
CODE	DIP SWITCH ON	LANGUAGE	CODE	DIP SWITCH ON	LANGUAGE	CODE	DIP SWITCH ON	LANGUAGE
193	1,7,8	Czech	206	2,3,4,7,8	Danish	218	2,4,5,7,8	Dutch
195	1,2,7,8	Hebrew	207	1,2,3,4,7,8	Norwegian	219	1,2,4,5,7,8	Greek
196	3,7,8	Polish	211	1,2,5,7,8	Swedish	220	3,4,5,7,8	English
197	1,3,7,8	Catalan	215	1,2,3,5,7,8	Italian	221	1,3,4,5,7,8	German
198	2,3,7,8	Galician	216	4,5,7,8	French	222	2,3,4,5,7,8	Portuguese
199	1,2,3,7,8	Basque language	217	1,4,5,7,8	Spanish			



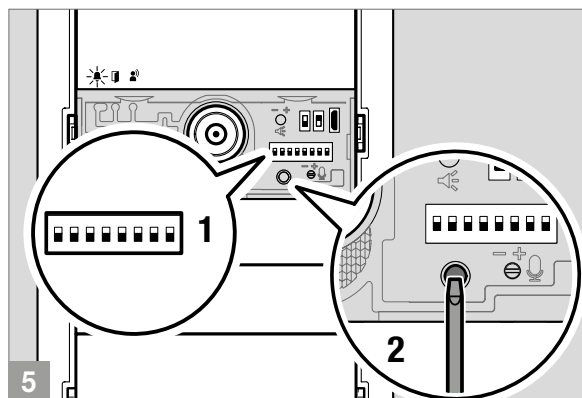
### CAUTION!

If you program special function 210 “Enable visual messages and disable voice messages”, the language programming will be deleted.

# Programming voice messages in two languages



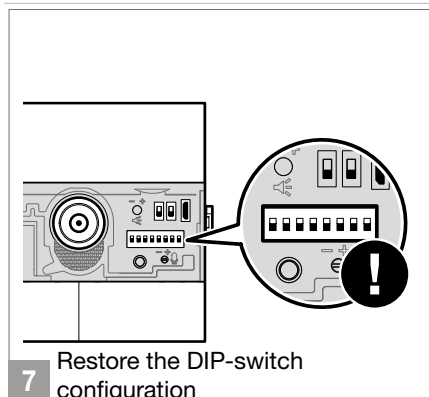
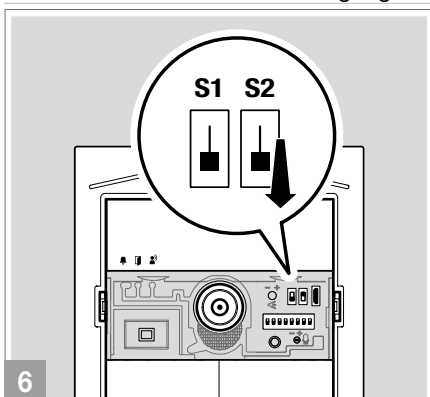
1. Set the dip switches for the **first** desired language (see **TAB B**)
2. Press the confirmation button.



1. Set the dip switches for the **second** desired language (see **TAB B**)
2. Press the confirmation button.

TAB B

CODE	DIP SWITCH ON	LANGUAGE	CODE	DIP SWITCH ON	LANGUAGE	CODE	DIP SWITCH ON	LANGUAGE
193	1,7,8	Czech	206	2,3,4,7,8	Danish	218	2,4,5,7,8	Dutch
195	1,2,7,8	Hebrew	207	1,2,3,4,7,8	Norwegian	219	1,2,4,5,7,8	Greek
196	3,7,8	Polish	211	1,2,5,7,8	Swedish	220	3,4,5,7,8	English
197	1,3,7,8	Catalan	215	1,2,3,5,7,8	Italian	221	1,3,4,5,7,8	German
198	2,3,7,8	Galician	216	4,5,7,8	French	222	2,3,4,5,7,8	Portuguese
199	1,2,3,7,8	Basque language	217	1,4,5,7,8	Spanish			



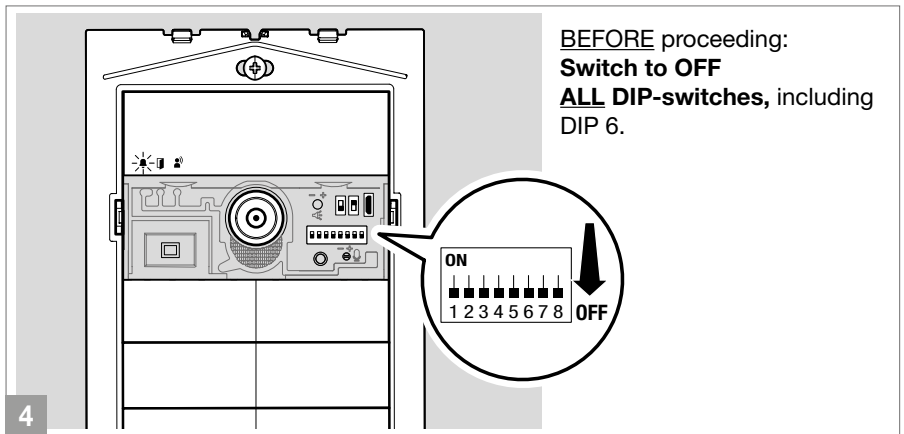
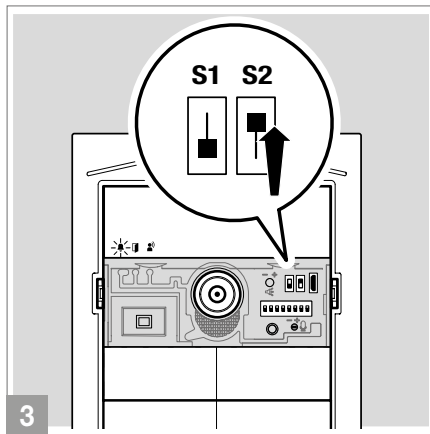
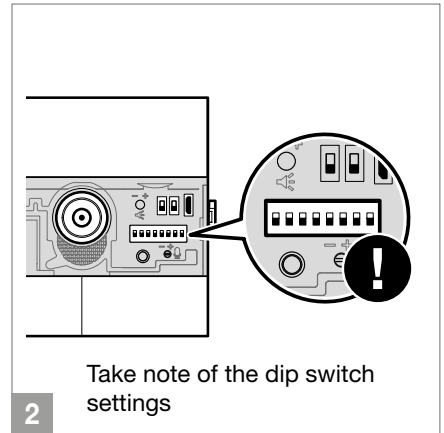
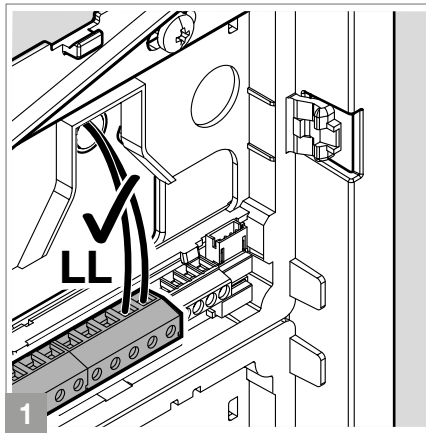
## CAUTION!

If you program special function 210 "Enable visual messages and disable voice messages", the language programming will be deleted.

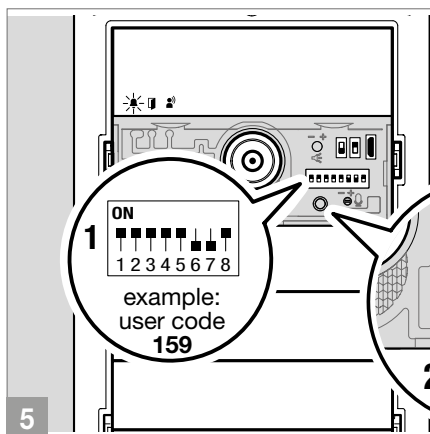
# Dusk sensor

## Management of camera LED lighting and button backlighting

**i** The twilight sensor is set to **AUTO** mode by default: the camera led and button led light up at night and turn off during the day. To change the setting to **ON** (led always on) or **OFF** (led always off), follow the procedure below.



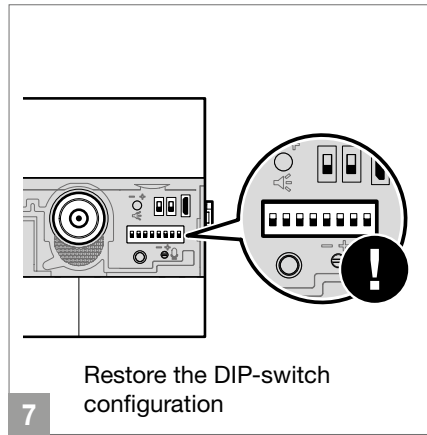
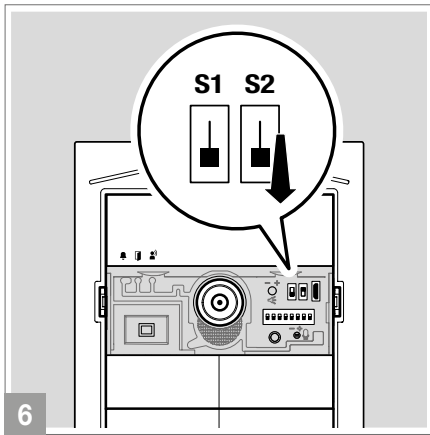
**BEFORE** proceeding:  
Switch to **OFF**  
**ALL** DIP-switches, including  
DIP 6.



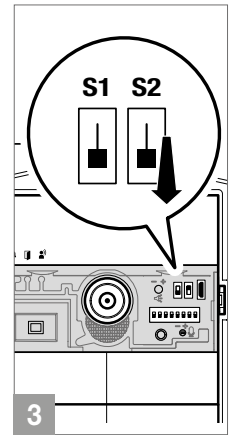
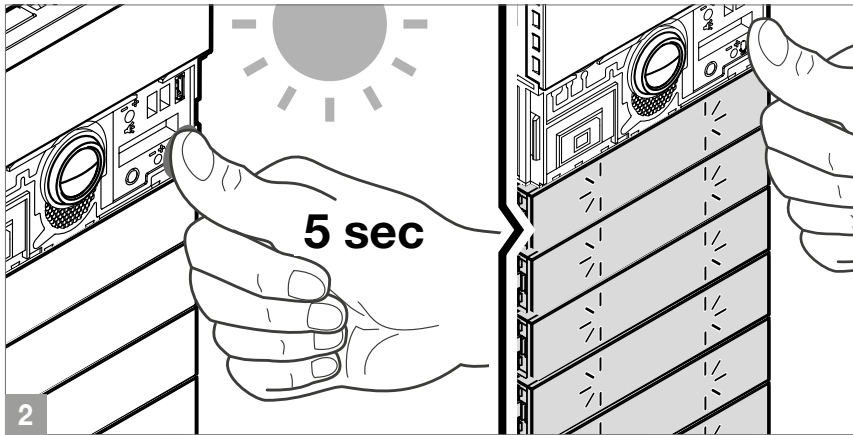
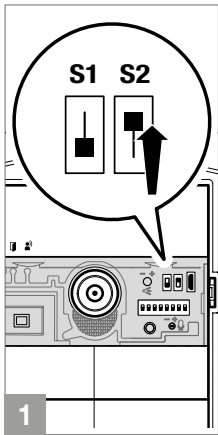
- Set the desired mode for the camera led (A) or for the button led (B)
- Press the confirmation button

	OFF	ON	AUTO (default)
camera led (A)	ON 1 2 3 4 5 6 7 8 cod. 168	ON 1 2 3 4 5 6 7 8 cod. 169	ON 1 2 3 4 5 6 7 8 cod. 170
button led (B)	OFF ON 1 2 3 4 5 6 7 8 cod. 158	ON ON 1 2 3 4 5 6 7 8 cod. 159	AUTO (default) ON 1 2 3 4 5 6 7 8 cod. 160

**i** **NOTE:** even when the OFF and AUTO lighting modes are active, every time the entrance panel is powered, the buttons light up for the entire duration of the start-up phase (maximum 10 seconds).  
In **AUTO** mode, the twilight sensor checks the ambient brightness level every 9 minutes; if the measured values exceed the set minimum/maximum threshold, it activates/deactivates accordingly.



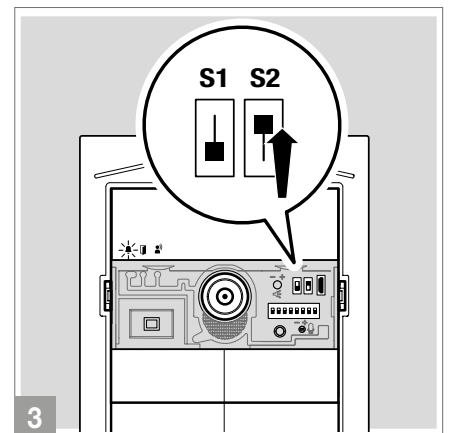
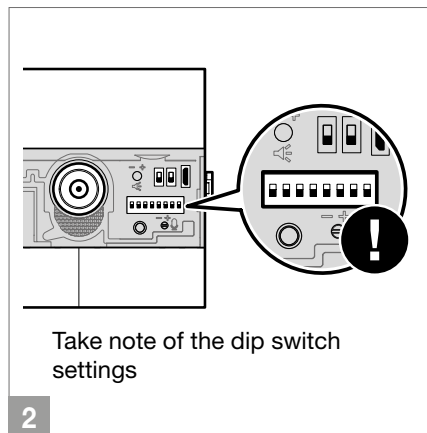
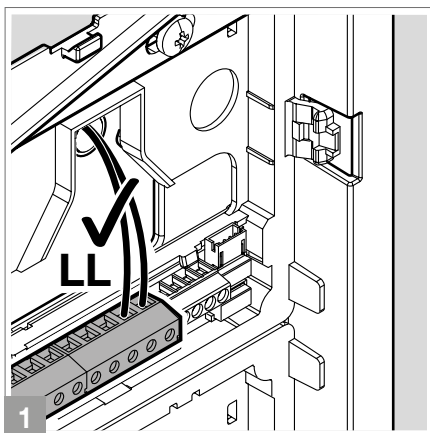
## Check dusk sensor operation



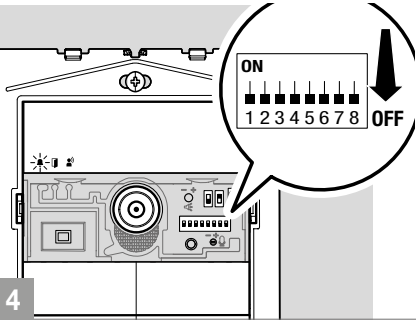
If it is daytime and you wish to check the operation of the AUTO mode of the twilight sensor, you can follow the procedure below:

1. Enter programming
2. Cover the twilight sensor for 5 seconds
  - » If AUTO mode has been set, the camera led and button led will light up.
3. Exit programming

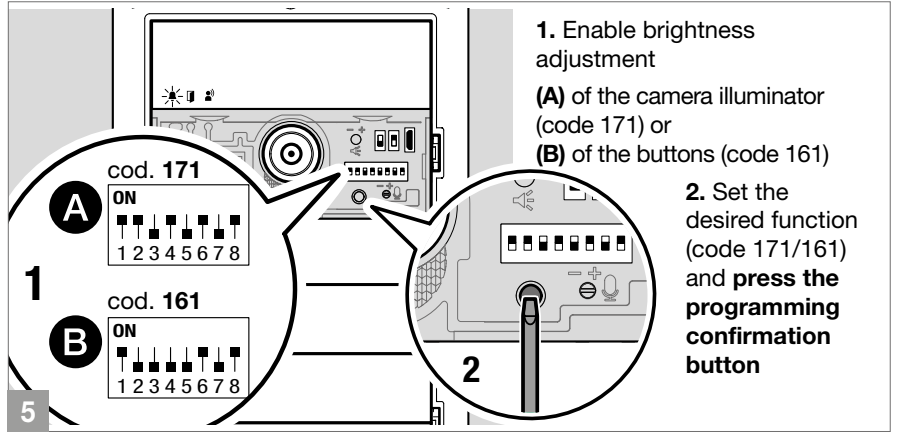
## Adjustment of the brightness intensity of the button leds and the camera illuminator



**BEFORE** proceeding:  
**Switch to OFF**  
**ALL DIP-switches**, including DIP 6.



4

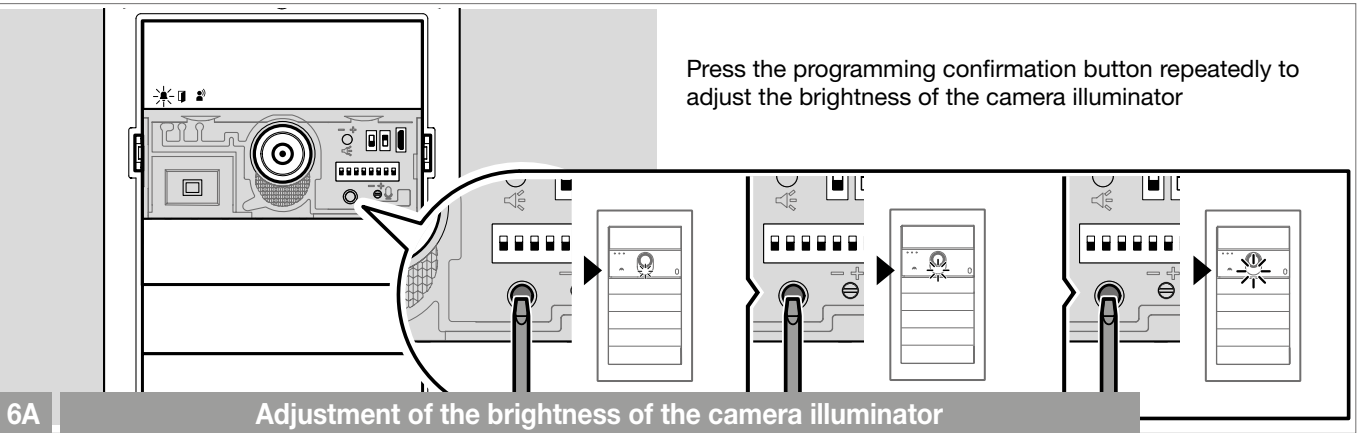


1

5

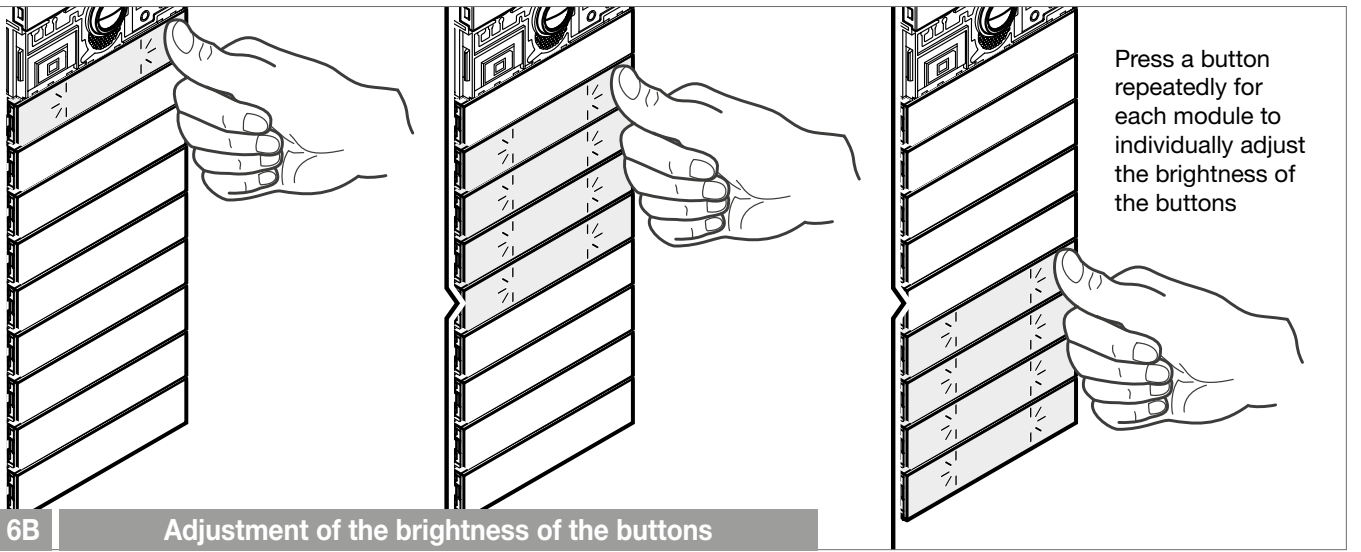
**1.** Enable brightness adjustment  
**(A)** of the camera illuminator  
 (code 171) or  
**(B)** of the buttons (code 161)

**2.** Set the desired function  
 (code 171/161) and **press the programming confirmation button**



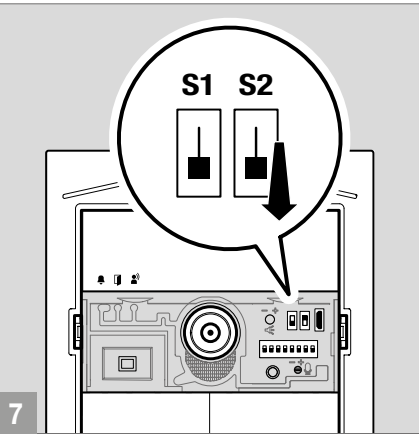
Press the programming confirmation button repeatedly to adjust the brightness of the camera illuminator

6A Adjustment of the brightness of the camera illuminator

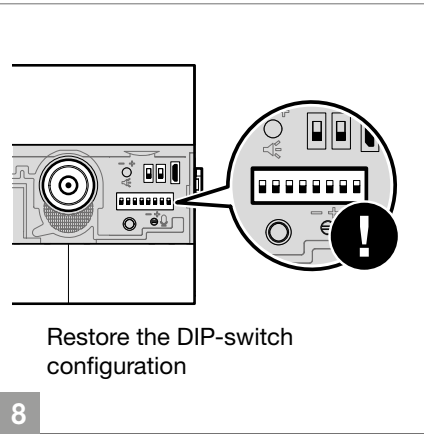


Press a button repeatedly for each module to individually adjust the brightness of the buttons

6B Adjustment of the brightness of the buttons



7



8

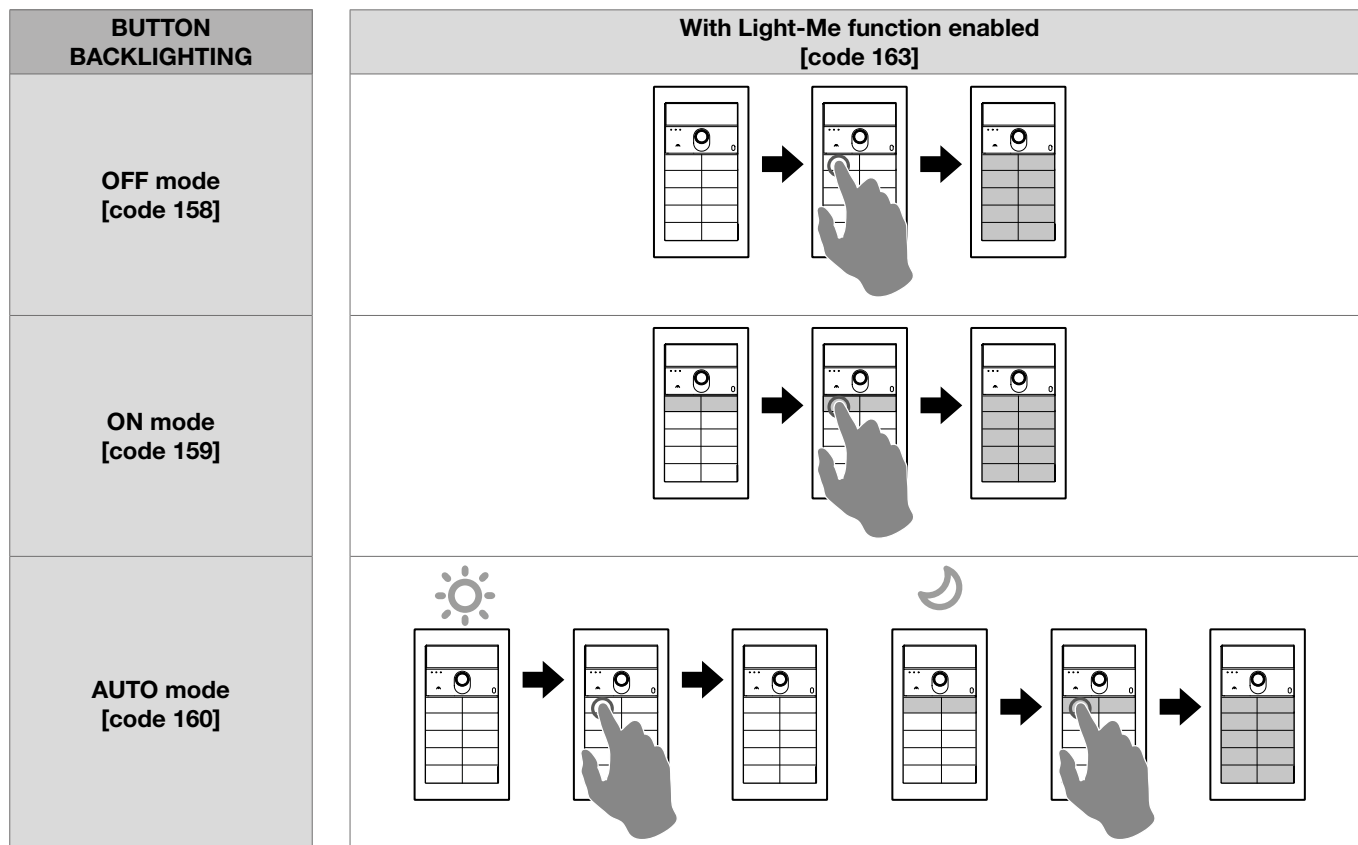
Restore the DIP-switch configuration

# Light me function

Thanks to this feature, the backlighting of the buttons will be activated only at the user's request by pressing the LIGHT-ME button located on the audio/video module, allowing energy savings and a reduction in light pollution.

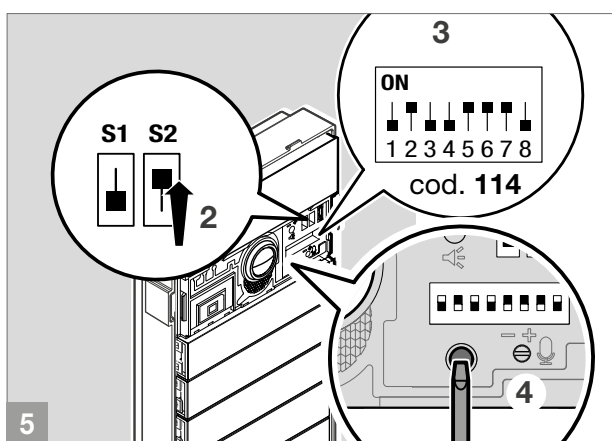
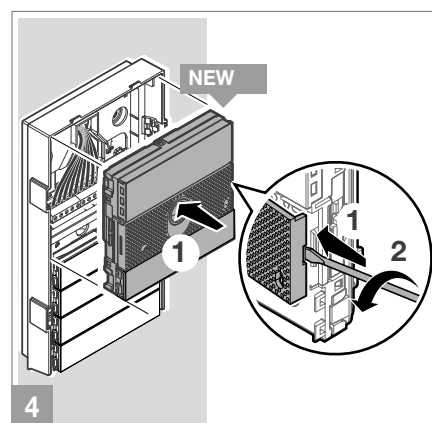
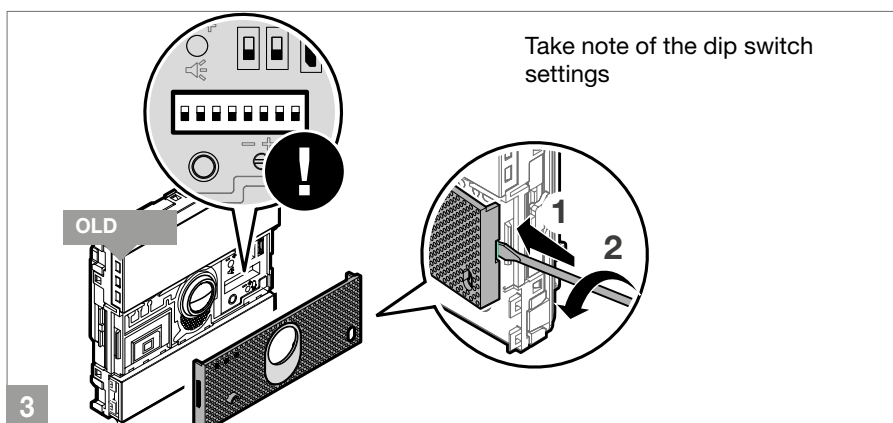
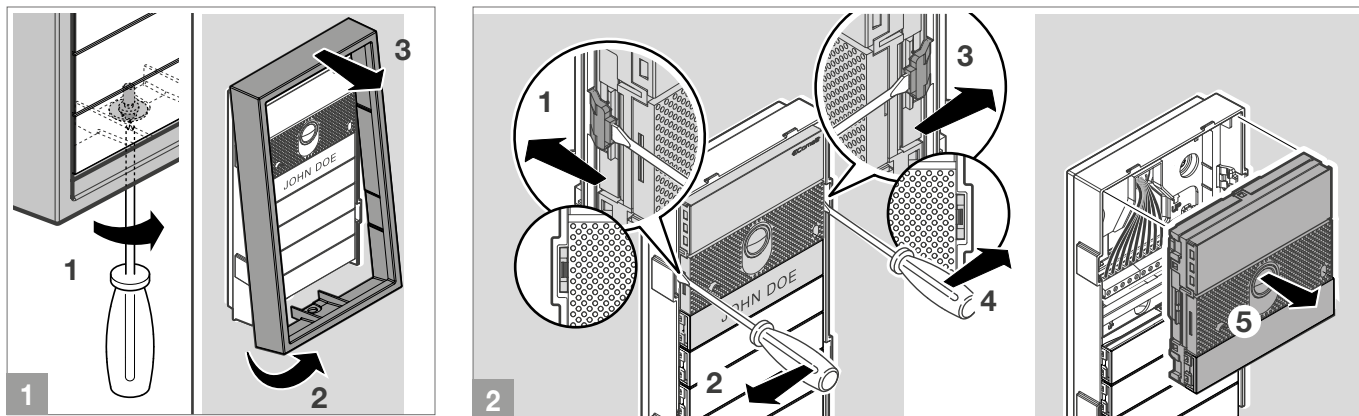
The management of the backlighting of this button depends on the setting of the twilight sensor. By default, it is in AUTO mode: the led light up at night and turn off during the day. It is possible to set it to ON (led always on) or OFF (led always off).

## Behavior of the Light me function depending on the led backlighting mode

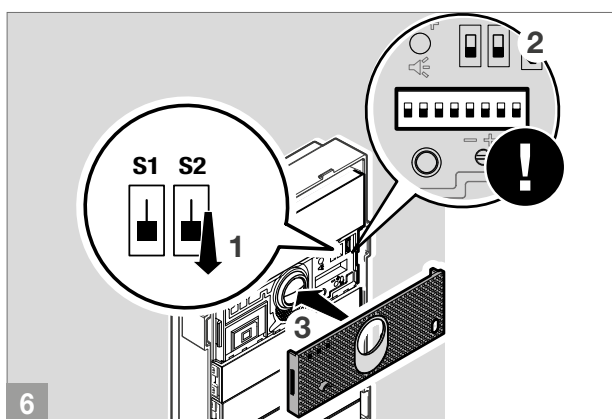


# Replacement of the audio/video module with programming restore backup

**i** In case of replacement of the audio/video module, it is necessary to follow the instructions below. The procedure must be completed within one hour of removing the old module.

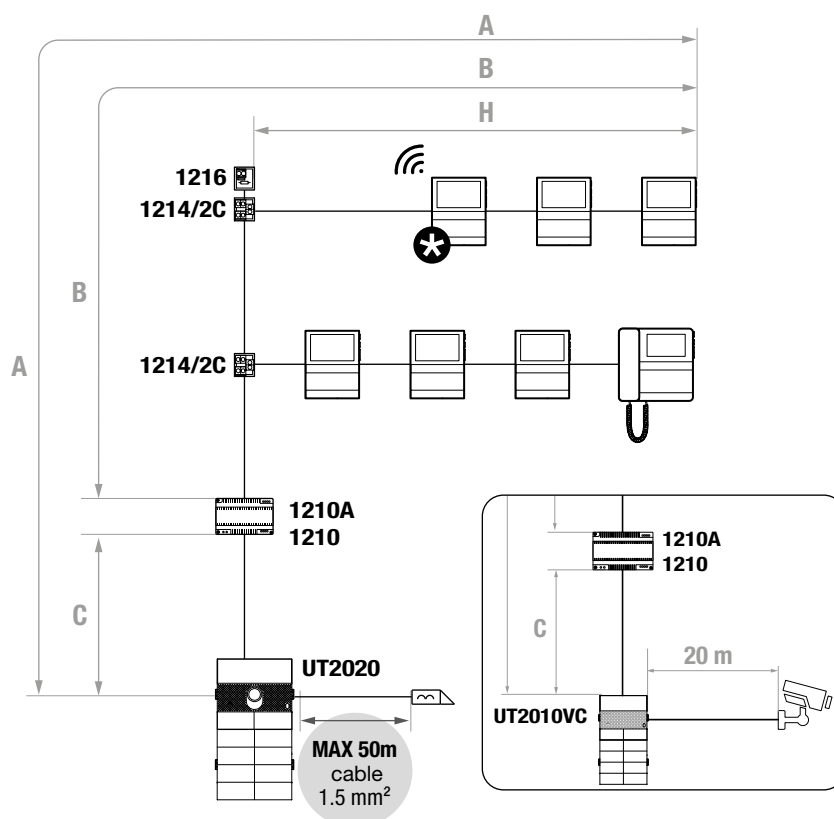


4. Wait 90 seconds
5. Enter programming by raising the dip switch of S2
  - » the red led "system busy" flashes for the entire duration of the operation
6. Set special programming 114 to import all programmings
7. Press the programming confirmation button
  - » the green led "lock-release" lights up steadily
 At the end of the backup:
  - » the green led "lock-release" turns off and, if the operation was successful, a confirmation tone is heard.



8. Exit programming mode by lowering the dip switch of S2
  - » the red led "system busy" turns off
9. Restore the DIP-switch configuration
10. Reattach the front panel

# System performance



The use of shielded cables may reduce the distances by 50%

		A MAX	B MAX	C MAX	H MAX	art. 1216
Comelit art. 4577/4579 1 mm <sup>2</sup> (Ø 1.2 mm AWG 17)		260 m (850 feet)	130 m (425 feet)	130 m (425 feet)	50 m (164 feet)	
UTP cat. 5-6-7 0.2 mm <sup>2</sup> (Ø 0.5 mm AWG 24)		* 80 m (262 feet)	40 m (130 feet)	40 m (130 feet)	30 m (98 feet)	
		60 m	30 m	30 m		
0,28 mm <sup>2</sup> (Ø 0.6 mm AWG 23)		100 m (328 feet)	50 m (164 feet)	50 m (164 feet)	30 m (98 feet)	
0,5 mm <sup>2</sup> (Ø 0.8 mm AWG 20)		140 m (460 feet)	70 m (230 feet)	70 m (230 feet)	30 m (98 feet)	
1,5 mm <sup>2</sup> (Ø 1.4 mm AWG 15)		160 m (524 feet)	80 m (262 feet)	80 m (262 feet)	30 m (98 feet)	
UTP cat. 5 0.2 mm <sup>2</sup> (Ø 0.5 mm AWG 24) MULTI PAIR CABLE ‡		260 m (850 feet)	130 m (425 feet)	130 m (425 feet)	50 m (164 feet)	

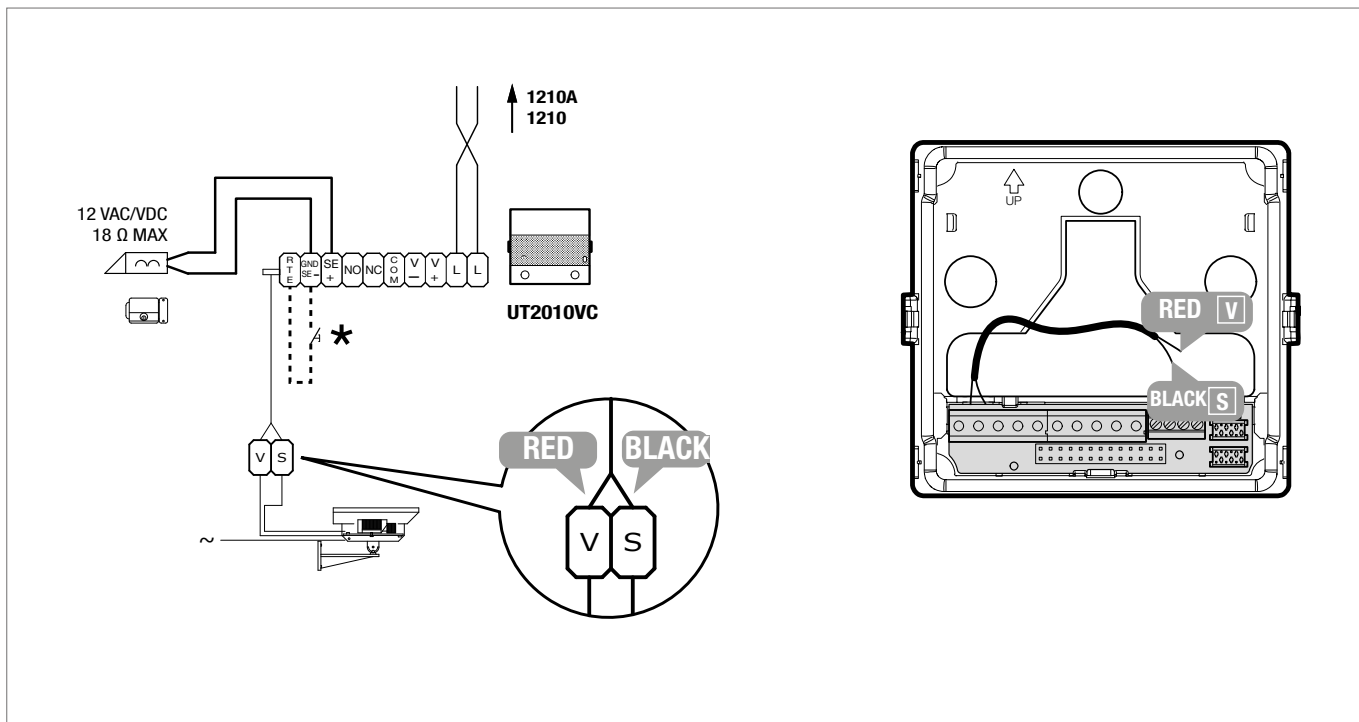
‡ UTP cable with multi-pair connection: FOLLOW THE COLORS INDICATED IN THE FIGURE!





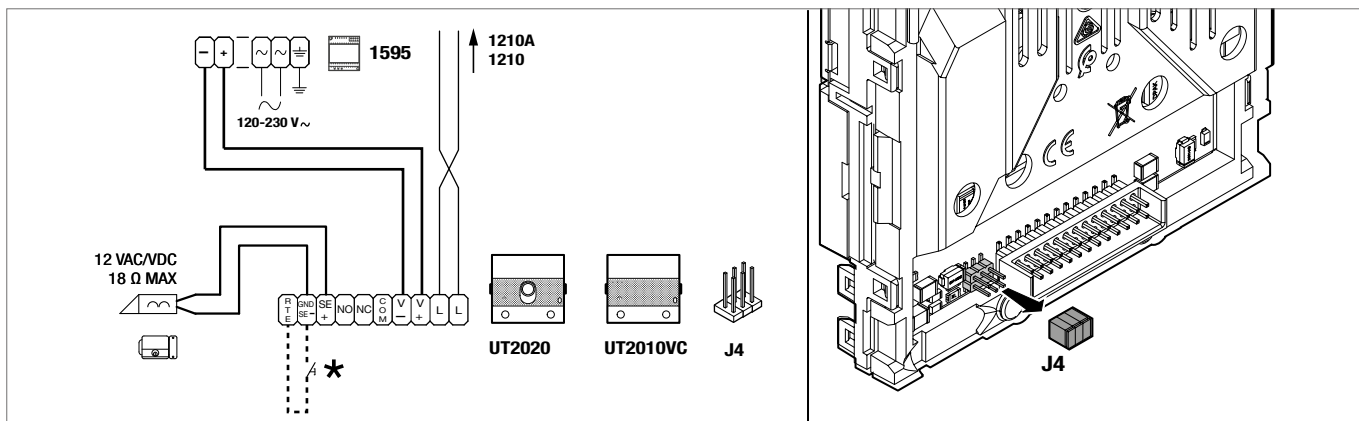
# Connections

## Remote camera connection (only for art. UT2010VC)



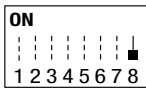
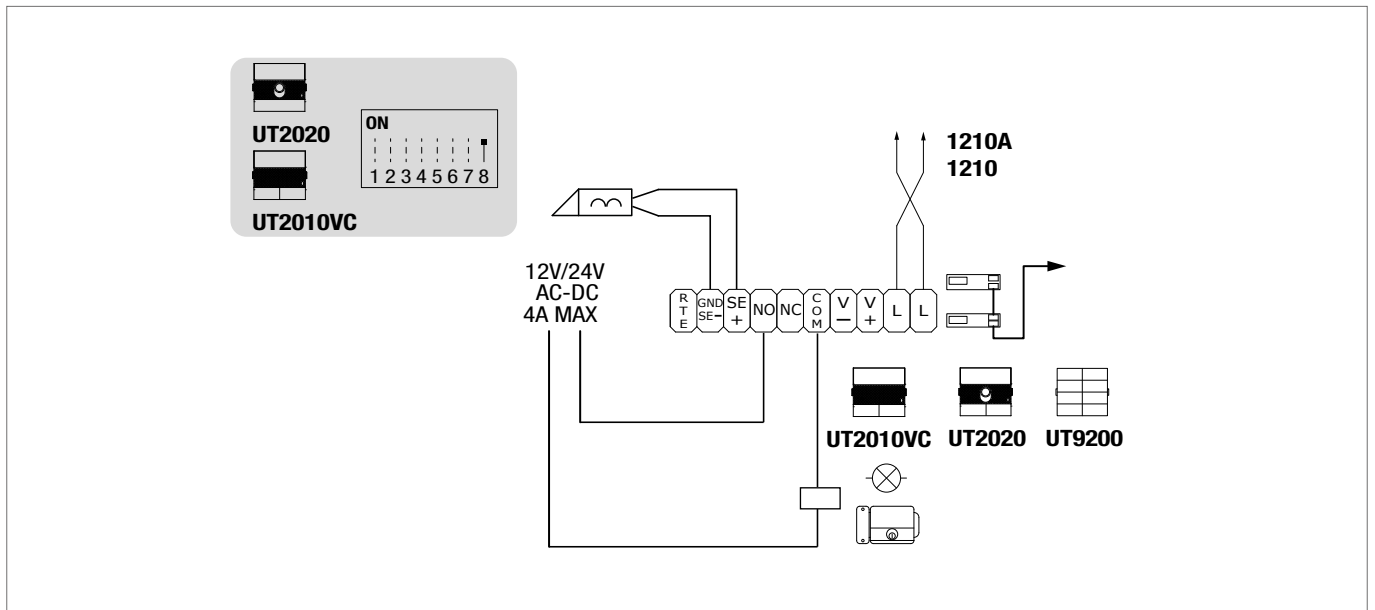
★ Max 20 m. Local door-opener button.

## Connection with separate power supply



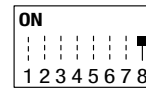
★ Max 20 m. Local door-opener button.

## Use of the entrance panel relay



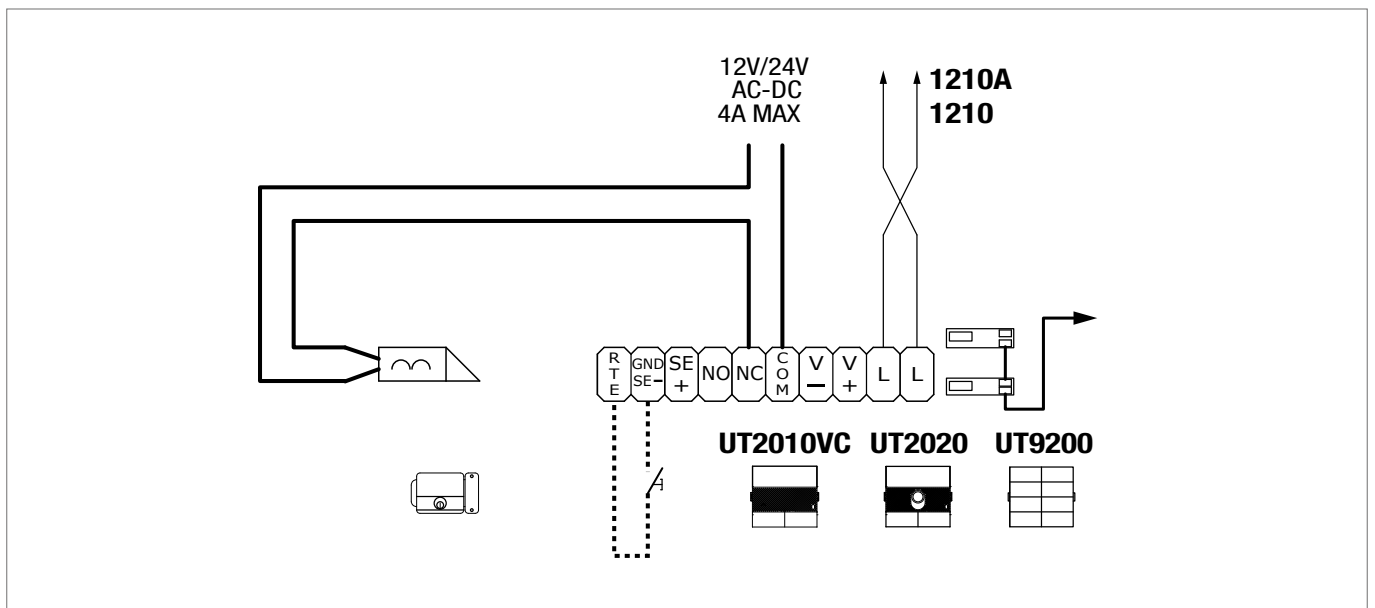
### Relay activation C.NC.NO: 2 sec. (Default)

The SE output and the C-NO relay are controlled by 1 button of the door entry monitor: key button.



The SE output and the C-NO relay are controlled by 2 separate buttons of the door entry monitor: key button (SE) and generic actuator button (C-NO).

## Use of security door lock



# System performance and diagrams

For more information on system performance and to view installation diagrams, click on the type of system:

- [Audio/video Simplebus2](#)



CERTIFIED MANAGEMENT SYSTEMS



[www.comelitgroup.com](http://www.comelitgroup.com)

Via Don Arrigoni, 5 - 24020 Rovetta (BG) - Italy

5th edition 01/2026  
code 2G40003661  
Rev1 03/2026